

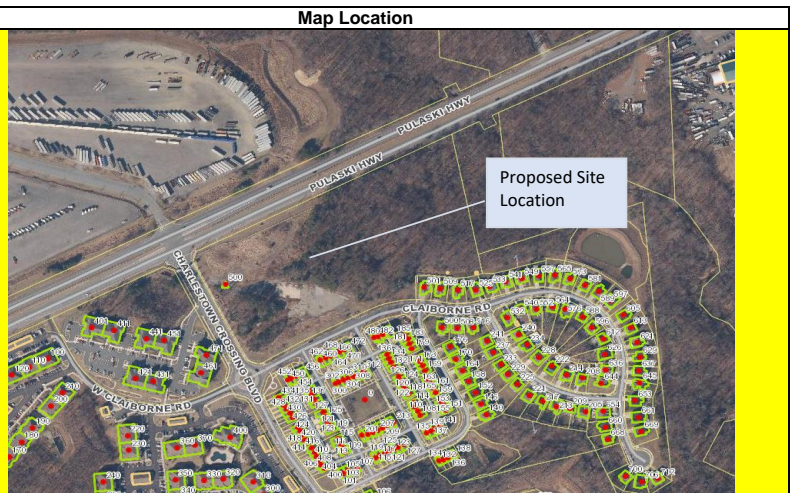
Project Form Cecil County Capital Improvements Program 2025

Agency/Department: DES	Project Number: 50051
Project Title: DES Paramedic Station #2	Project Location: TBD
Initial Year Submitted Was it in Last Year's Submittal Year Started % Complete Contact Person	FY24 Y FY24 TBD John Donohue

(\$ in thousand's)

Project Description/Status:

The current Paramedic Station #2 proposed location is located in leased space along Route 40 between North East and Elkton. This project will construct a new paramedic station along the Route 40 corridor in the vicinity of Charlestown to replace the leased space the current paramedic station utilizes and in a better location given projected future growth, call volumes, and response times. The paramedic station will include vehicle bays, office, bunk, and storage space. Water, sewer, and communications infrastructure will be extended to the site. Project is currently in land acquisitions and design phase



EXPENDITURE SCHEDULE

Cost Elements	Total Cost	Prior Funding	5 Year Capital Program					5 Year Total	Project Total thru FY29	Balance to Complete
			FY 2025	FY 2026	FY 2027	FY 2028	FY 2029			
Design/Engineering	250	250						-	250	
Land Acquisition	400	400						-	400	
Site Work	1,290	390	900					900	1,290	
Construction	2,900		2,900					2,900	2,900	
Equipment/Furnishings	116		116					116	116	
Other 1	-							-	-	
Other 2	-							-	-	
Total Investment	4,956	1,040	3,916	-	-	-	-	3,916	4,956	-

FUNDING SCHEDULE

Paygo (County, WW, SW)	-								-	-	
Bonds (County, WW, SW)	1,474	450	1,024					1,024	1,474		
County ARPA	3,482	590	2,892					2,892	3,482		
Other	-							-	-		
County Total	4,956	1,040	3,916	-	-	-	-	3,916	4,956	-	
Federal	-							-	-		
State	-							-	-		
Other Government	-							-	-		
Government Total	-	-	-	-	-	-	-	-	-	-	
Total Funds	4,956	1,040	3,916	-	-	-	-	3,916	4,956	-	

OPERATING BUDGET IMPACT:

Estimated Annual Debt Service Cost:	0
Annual Operating/Maintenance Cost:	0
New Positions (FTE's):	0.0

Financial Activity as of
Expended
Encumbered
Total

10/1/2023
3,200
21,500
24,700