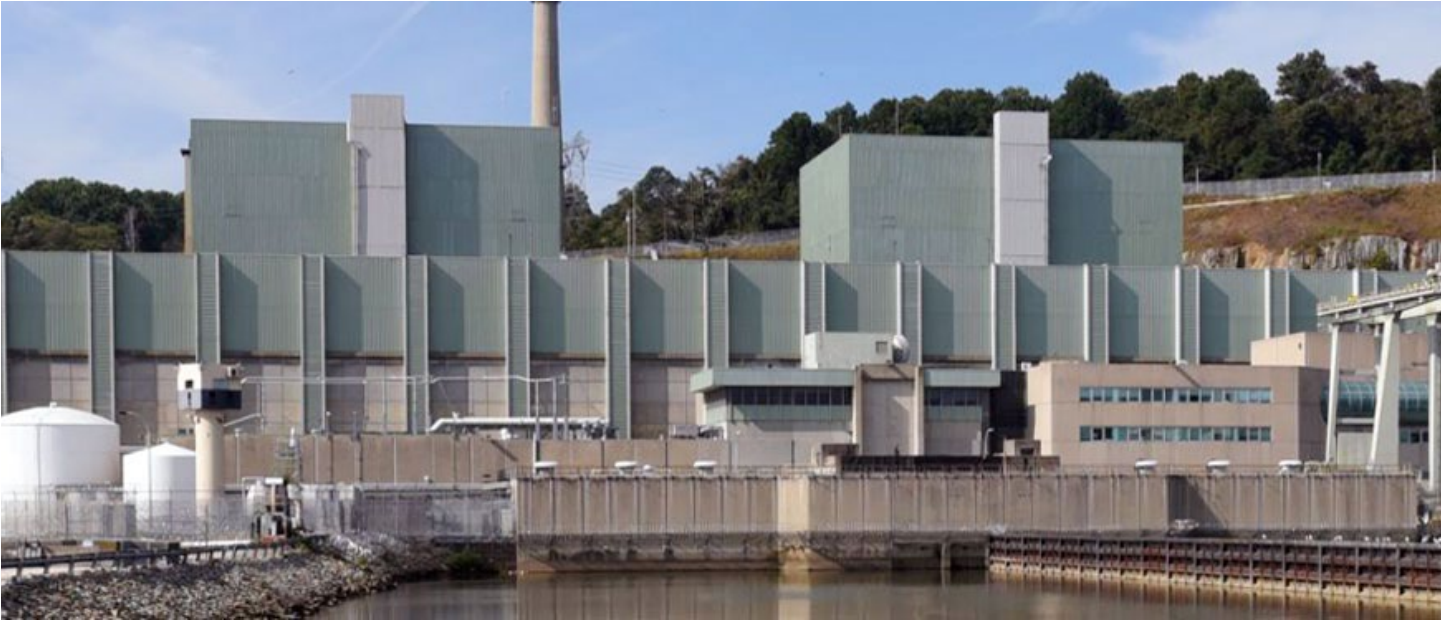




# Emergency Planning for the Peach Bottom Area



## Important Safety Information For Your Community and Annual Needs Survey **2023/2024**

Please read the entire brochure or have someone translate it for you. Discuss this information with members of your family, and then keep the brochure in a convenient place for future use.

### **ESTA INFORMACIÓN ES IMPORTANTE**

Por favor lea este panfleto o busque a alguien que se lo lea. Comparta esta información con su familia y mantenga este panfleto en un lugar conveniente para un uso futuro.

# What to Do in an Emergency

## Monitor and Prepare

Tune your radio or TV to one of the stations listed in this brochure. Monitor the radio or TV for emergency information and follow emergency instructions. People should prepare for possible evacuation (e.g. reunite with family members, assemble emergency kits, provide for pet needs, keep off of the road as much as possible).

## Keep Phone Lines Open

Please do not make unnecessary phone calls. Leaving phone lines open for emergency workers will help everyone involved. If you require assistance, call the emergency phone numbers broadcast on the radio or TV.

## Shelter-in-Place

Go indoors and stay there. Close all doors and windows and shut off any systems that draw in outside air, such as furnaces, fireplaces and air conditioners. Keep listening to the radio or TV for updates. Keep pets inside and shelter farm animals. If traveling in a vehicle, close windows and vents.

## If Instructed to Evacuate

In an evacuation, people in the affected area will be asked to go to local reception centers listed within this brochure. After this, they can stay at specified mass care centers or with friends or relatives outside the evacuation zone.

*Please do not try to pick up children or others at schools, hospitals, nursing homes or overnight campgrounds.* These facilities will be following their own emergency plans, and you would most likely miss connections. If evacuated, students, hospital patients and nursing home residents will be accompanied to relocation centers where their needs will be addressed. To find out where people are being moved, stay tuned to the radio or TV.

Plan for three days away from home, locking up and turning appliances off as you would for a weekend vacation. Pack all necessary items (see "Emergency Supplies"). Evacuate everyone in your home, following directions given on the radio or TV. These routes will have been selected as the safest ways out of the affected area.

NOTE: If time permits and if safe to do so, the public is encouraged to alert neighbors, by means other than the telephone, to ensure they heard and understand the warning signals and have transportation to reception centers.

## Shadow Evacuation

People should only evacuate when instructed to do so. Evacuation of individuals not within the declared evacuation area could impede evacuation traffic flow. Monitor the radio or TV and prepare to follow instructions.

## Staged Evacuation

You may be instructed to shelter-in-place until people in a higher risk area are evacuated. Monitor the radio or TV and prepare to follow instructions.

## Information for Farmers

When advised to do so, remove all livestock from pasture, shelter if possible and provide them with stored feed and protected water. The county U.S. Department of Agriculture representative will provide further instructions regarding the protection of livestock and foodstuffs.

## School Information

If your child's school is in session at the time evacuation is recommended, children attending schools located within the emergency planning zone will be transported to designated host schools outside the area. They will remain under supervision until picked up by parents or guardians. These host schools have been planned to coincide with main evacuation routes. Children whose

homes are inside the emergency planning zone, but who attend school outside the emergency planning zone, will not be sent home if an evacuation is recommended. They will remain at the school under supervision until picked up by parents or guardians. See the “County-specific School Information” within this brochure or contact school officials for more information.

### Non-Public School and Day Care Information

Parents and guardians with children attending non-public schools or at day care facilities within the emergency planning zone should become familiar with the facilities’ emergency plans. Contact the facility operator for more information.

## How to Prepare for an Emergency

You never know when you might have to leave your home on short notice. A nuclear incident is only one possibility. Floods, fires, chemical spills or severe illness could occur at any time. Preparing now will help you respond more quickly in any emergency.

### Emergency Kit

Keep an emergency kit – portable radio, flashlight, extra batteries, extra car keys, first aid kit and other items – in a special place that the whole family can easily locate. Include this booklet in your emergency kit with your location marked on the map. Write a list of the items you would want to take if you had to leave home quickly and post the list in a convenient spot. Be sure to keep a supply of all the items on your list. Gather any important documents that you might need in an emergency and keep them together in a safe place that you can access quickly and easily.



### Transportation

Maintain your vehicle in good running order and keep the gas tank at least half full at all times. If you will need transportation in an emergency, use the attached reply card to notify local authorities now.

### Pets

Service animals will be permitted inside reception centers or shelters.

Pet sheltering information will be available at the reception centers and shelters for your area.

Contact your respective County Emergency Management Agency for additional information.

## Emergency Supplies

- General first aid kit and any special medication
- Cash, credit, or ATM cards
- Important documents
- Change of clothing
- Personal health products (toothbrush, eye care, sanitary products, etc.)
- Baby formula, diapers, car seat, toys
- Special dietary foods
- Pet related supplies



# Emergency Alert System

The **Emergency Alert System** will provide you with official information in cases of tornadoes, floods, nuclear plant accidents or other emergencies. Turn on your radio or TV for official information and instructions.

## Emergency Alert Stations

### Lancaster County

#### AM

WPDC 1600

WRKY 1490

WLAN 1390

#### FM

WIOV 105.1\*

WDAC 94.5

WFNM 89.1

WLAN 96.9

WIXQ 91.7

WJTL 90.3

WLCH 91.3

#### TV

WGAL CH 8

### York County

#### AM

WHVR 1280

WYYC 1250

WSBA 910\*

WOYK 1350

WGET 1320

WGLD 1440

#### FM

WSOX 96.1

WARM 103.3\*

WYCR 98.5

WVYC 88.1

WGTY 107.7

WPPY 92.7

WHVR 95.3

#### TV

WGAL CH 8

WPMT CH 43

WLYH CH 49

### Chester County

#### FM

WHYY 90.9\*

WMGK 102.9\*

### Cecil County

#### AM

WHGM 1330

WBAL 1090

#### FM

WXCY 103.7\*

WOEL 89.9

### Harford County

#### AM

WBAL 1090

#### FM

WXCY 103.7\*

WHFC 91.1

#### TV

COMCAST CH 21

ARMSTRONG CH 7

\* Designated Emergency Alert System Control Station

# Nuclear Power and Public Safety

## Benefits and Potential Risks of Nuclear Power

Used properly, nuclear fission (the “splitting” of uranium atoms) is a safe, dependable source of electricity. It is reasonable, though, to be concerned about what might happen in the event of a serious incident at a power plant.

A power plant reactor cannot produce a nuclear explosion. The uranium fuel contains very little fissionable material. The complex structure of a nuclear power plant is designed to prevent the release of radiation. A serious incident, however, could allow some radiation to escape and be carried away from the plant by the wind. The degree of risk to the public would depend on the size of the plume, the direction and speed of the wind, and other factors.

## Emergency Planning for the Peach Bottom Area

Special plans have already been developed to protect the public in the event of a nuclear incident in your area. These plans give specific attention to people who – like you – live, work or visit within 10 miles of a nuclear power plant. Procedures are in place to help protect you and other members of the public in the unlikely event of a nuclear emergency. If necessary, area officials would declare an emergency and take measures to ensure public safety.

This pamphlet addresses procedures for the Peach Bottom area. Please read and keep this material for future reference. Although it specifically addresses a potential nuclear accident, much of the information is useful in any major emergency.

### *Warning Sirens*

If you hear a siren, you should tune to one of the Emergency Alert System (EAS) stations listed in this brochure for official information.

The sirens are full volume tested semi-annually in June and December. A monthly test is also conducted which operates the sirens for less than one minute.

A siren may malfunction and inadvertently sound. If you feel a siren is malfunctioning, please contact your county emergency management officials at the numbers below:

Chester County: (610) 344-5000/(800) 732-1580

Lancaster County: (800) 808-5236

York County: (717) 854-5571

Cecil County: (410) 996-5350

Harford County: (410) 638-3400

### *Public Inquiry Telephone Numbers*

Chester County: (610) 344-6480

Lancaster County: (717) 664-1221 (During emergencies)

York County: (717) 840-2380 (During emergencies)

Cecil County: (410) 392-2017 (During emergencies)

Harford County: (410) 838-5800 (During emergencies)

### *Shelter-in-Place or Evacuation*

Officials might recommend that people either take shelter indoors or evacuate an area. It is critically important that you follow the recommended course of action. Staying home when instructed to evacuate or driving around when urged to stay indoors could expose you to danger unnecessarily.

**NOTE:** If you or someone you know might not respond to warning sirens or TV or radio broadcasts due to impaired hearing or other factors, please contact your County Emergency Management Agencies to register.

## Potassium Iodide (KI)

Potassium Iodide (KI) is a nonprescription drug that may prevent the thyroid from absorbing radioactive iodine. KI is one type of protective action that may be recommended during a nuclear incident. KI should only be taken at the direction of the appropriate state and local authorities. Consult your physician if you have concerns about the safety of KI for your child or yourself. KI is effective in blocking the absorption of radioactive iodine only. Since it does not block the absorption of any other radioactive material, evacuation or sheltering in place may be the most effective and preferred protective actions. Residents living within the 10-mile radius, who have not already done so, may obtain more information about KI or obtain KI by contacting:

**Harford County Health Department at (410) 838-1500**  
**Cecil County Health Department at (410) 996-5113**  
**Pennsylvania Department of Health at 1-877-PA-HEALTH or**  
**[www.health.pa.gov](http://www.health.pa.gov)**

## Classification of Accidents

There are four accident classifications used to describe nuclear emergencies. We contact federal, state and local authorities in each of the following situations:

**Unusual Event** — A situation is in progress or already completed which could potentially degrade the plant's level of safety or indicate a security threat to the facility. No releases of radioactive material requiring offsite actions are expected unless safety systems degrade further.

**Alert** — Events are in progress or have occurred which have (or could) substantially degrade the plant safety; or, a security event that could threaten site personnel or damage to site equipment is in progress. Any offsite releases of radioactive material that could occur are expected to be minimal and far below limits established by the Environmental Protection Agency's (EPA) protective action guides (PAGs).

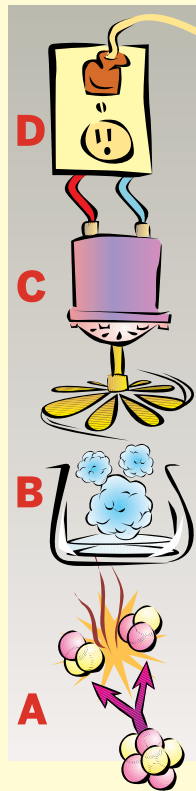
**Site Area Emergency** — Events are in progress or have occurred which have caused (or likely will cause) major failures of plant functions that protect the public, or involve security events with intentional damage or malicious acts that could lead to the likely failure of (or prevent effective access to) equipment needed to protect the public. Any offsite releases of radioactive material are expected to remain below EPA PAG exposure levels beyond the site boundary.

**General Emergency** — Events are in progress or have occurred which: a) have caused (or shortly will cause) substantial reactor core damage, with the potential for uncontrolled releases of radioactive material; or, b) involve security events that deny plant staff physical control of the facility. Offsite releases can be reasonably expected to exceed EPA PAG exposure levels beyond the plant site.



# What You Need to Know About Nuclear Power Plants and Radiation

## How Do Nuclear Plants Work?



Power plants create electricity by running steam turbines, which are powered either by fossil fuels – coal, oil, natural gas – or by nuclear power. Nuclear technology produces energy by splitting uranium atoms in a process called fission. (A) Fission generates heat that (B) boils water for the steam that runs the (C) turbines, which produce the (D) electricity that we all use – making, for instance, (E) toast for breakfast.

In a nuclear power plant, pea-sized uranium pellets are stacked inside long, thin fuel rods, which are grouped in “assemblies” inside a reactor “core.” The core is encased in a very thick steel capsule, and the entire reactor is further protected by an airtight steel and concrete building called a “containment.” This complex structure is designed to help ensure the safe utilization of nuclear power.

## How Do We All Benefit From Nuclear Power?

Any fuel used to produce energy also produces waste. By-products of coal-burning include smoke, ashes and slag. Even with the latest technologies, it is impossible to prevent some of this waste from reaching the environment outside the power plant. Nuclear power generation, on the other hand, produces waste primarily in the form of spent fuel, which is not released into the environment. Besides helping

to protect the environment, nuclear energy is also highly efficient, producing vastly more energy for its weight than coal or oil. We would have to burn more than 120 gallons of oil or up to a ton of coal to produce the same amount of energy as that found in a single pellet of uranium.

## What Is Radiation?

Radiation is energy in the form of rays or particles. Some atoms – the ones we call radioactive – are unstable. As they go through a natural process called “decay” in which they change into a stable atom, they throw off rays or particles called radiation. Radiation is exactly the same, whether from nature, or medical or industrial activities.

Radiation is measured in millirems. On average, a person receives about 300 millirem of radiation annually from natural sources and another 300 millirem or so from X-rays and other medical procedures. It takes more than 35 times this much — over 20,000 millirem in a single day — to produce identifiable effects in the body. Federal regulations allow workers to receive up to 5,000 millirem of radiation in the course of a year’s work.

## For More Information, Please Visit:

[www.dep.pa.gov/Business/RadiationProtection/Pages/default.aspx](http://www.dep.pa.gov/Business/RadiationProtection/Pages/default.aspx)

[www.nrc.gov](http://www.nrc.gov)

[www.nei.org](http://www.nei.org)

[www.hps.org/publicinformation/Radterms](http://www.hps.org/publicinformation/Radterms)

[www.emergency.cdc.gov/radiation](http://www.emergency.cdc.gov/radiation)

# Evacuation Routes/Reception Centers/ Transportation Assistance Numbers



Know your location on the map and mark it. Some primary evacuation routes are listed below. In an emergency, follow the directions given on the radio or TV, even if different from those shown below. Broadcasted directions will be based on actual road and weather conditions and wind direction – helping to ensure your safety as you leave the evacuation area. Report to the identified reception center if you need a temporary place to stay. At the center, you will be given directions to a mass care center nearby. For those who require transportation assistance, call the transportation assistance numbers listed below for your area.



# Evacuation Routes/Reception Centers/ Transportation Assistance Numbers

## Chester County

### West Nottingham Township

**Evacuation Route:** Local routes to Route 1 North to Route 10 North to Route 41 North to Highland Road. Turn right. The reception center, Octorara Middle School, is located on the right.

**Reception Center:** Octorara Middle School.

**Transportation Assistance Number:** (610) 932-4072

### Chester County-Specific School Information

#### School District: Oxford Area School District

**Risk School:** All students living in the Emergency Planning Zone (EPZ).

**Host School:** Retained at school of attendance until 6 p.m. After 6 p.m., students will be relocated to the Oxford Area High School Gym.

\*Please refer to your district's plans and procedures for the most up to date information.

## Lancaster County

### Drumore Township

**Evacuation Route:** Follow local routes to Route 272 North and stay on 272. Turn right onto East Penn Grant Road. Make a slight left onto Lampeter Road. Continue on Lampeter Road until you reach 741 (Village Road). Turn right on Village Road. Turn left on Book Road. High School Entrance is on left at Rosier Way.

**Reception Center:** Lampeter-Strasburg High School.

**Transportation Assistance Number:** (717) 548-2660

### East Drumore Township

**Evacuation Route:** Follow local routes to turn onto Route 222 North. Turn right onto East Penn Grant Road. Make a slight left onto Lampeter Road. Continue on Lampeter Road until you reach 741 (Village Road). Turn right on Village Road. Turn left on Book Road High School Entrance is on left at Rosier Way.

**Reception Center:** Lampeter-Strasburg High School.

**Transportation Assistance Number:** (717) 786-3622

### Fulton Township

**Evacuation Route:** Take Route 222 to Route 272 North and stay on 272. Turn right onto East Penn Grant Road. Make a slight left onto Lampeter Road. Continue on Lampeter Road until you reach 741 (Village Road). Turn right on Village Road. Turn left on Book Road. High School Entrance is on left at Rosier Way.

**Reception Center:** Lampeter-Strasburg High School.

**Transportation Assistance Number:** (717) 548-3514

### Little Britain Township

**Evacuation Route:** Follow local routes to turn onto Route 222 North. Turn right onto East Penn Grant Road. Make a slight left onto Lampeter Road. Continue on Lampeter Road until you reach 741 (Village Road). Turn right on Village Road. Turn left on Book Road High School Entrance is on left at Rosier Way.

**Reception Center:** Lampeter-Strasburg High School.

**Transportation Assistance Number:** (717) 529-2373

### Martic Township

**Evacuation Route:** Follow local routes to turn onto Route 222 North. Turn right onto East Penn Grant Road. Make a slight left onto Lampeter Road. Continue on Lampeter Road until you

reach 741 (Village Road). Turn right on Village Road. Turn left on Book Road High School Entrance is on left at Rosier Way.

**Reception Center:** Lampeter-Strasburg High School.

**Transportation Assistance Number:** (717) 284-2167

### Providence Township

**Evacuation Route:** Follow local routes to Route 272 North and stay on 272. Turn right onto East Penn Grant Road. Make a slight left onto Lampeter Road. Continue on Lampeter Road until you reach 741 (Village Road). Turn right on Village Road. Turn left on Book Road. High School Entrance is on left at Rosier Way.

**Reception Center:** Lampeter-Strasburg High School.

**Transportation Assistance Number:** (717) 786-7981

### Quarryville Borough

**Evacuation Route:** Follow local routes to turn onto Route 222 North. Turn right onto East Penn Grant Road. Make a slight left onto Lampeter Road. Continue on Lampeter Road until you reach 741 (Village Road). Turn right on Village Road. Turn left on Book Road. High School Entrance is on left at Rosier Way.

**Reception Center:** Lampeter-Strasburg High School.

**Transportation Assistance Number:** (717) 786-2404

### Lancaster County-Specific School Information

#### School District: Penn Manor School District

**Risk School:** Martic Elementary School

**Host School:** Marticville Middle School

# Evacuation Routes/Reception Centers/ Transportation Assistance Numbers

## School District: Solanco School District.

**Risk Schools:** Solanco Senior High School  
Swift Middle School  
Smith Middle School  
Clermont Elementary School  
Quarryville Elementary School

**Host School:** Lampeter-Strasburg Campus

\*Please refer to your district's plans and procedures for the most up to date information.

## York County

### Delta Borough

**Evacuation Route:** Take Main Street to Maryland Route 136 West to MD Route 624 North to PA Route 851 West to PA Route 616 North to Fissel's Church Road to the reception center.

**Reception Center:** Susquehannock High School, South of Glen Rock.

**Transportation Assistance Number:** (717) 456-7280 (Emergency only)

### Fawn Grove Borough

**Evacuation Route:** Take local routes to Route 851 West to I-83N at Shrewsbury, go north one exit to Exit 8 and then take Route 216 West through Glen Rock to the reception center.

**Reception Center:** Susquehannock High School, South of Glen Rock.

**Transportation Assistance Number:** (717) 382-4834 (Emergency only)

### Fawn Township

**Evacuation Route:** Take local routes to Route 851 West to I-83N at Shrewsbury, go north one exit to Exit 8 and then take Route 216 West through Glen Rock to the reception center.

**Reception Center:** Susquehannock High School, South of Glen Rock.

**Transportation Assistance Number:** (717) 382-4834 (Emergency only)

## Lower Chanceford Township

**Evacuation Route:** Take local routes to Route 74 North to the reception center.

**Reception Center:** Red Lion Senior High School in Red Lion.

**Transportation Assistance Number:** (717) 862-3806 (Emergency only)

## Peach Bottom Township

**Evacuation Route:** Take local routes to Route 851 West to I-83N at Shrewsbury, go north one exit to Exit 8 and then take Route 216 West through Glen Rock to the reception center.

**Reception Center:** Susquehannock High School, South of Glen Rock.

**Transportation Assistance Number:** (717) 456-7280 (Emergency only)

## York County-Specific School Information

### School District: Red Lion School District

**Risk School:** All students living in the EPZ.

**Host School:** Students retained at the building of attendance for 2 hours, then transported to Red Lion Senior High School.

### School District: South Eastern School District

**Risk Schools:** Delta-Peach Bottom Elementary School  
Fawn Area Elementary School  
South Eastern Intermediate School

**Host Organization:** Grace United Methodist Church, New Freedom

**Risk Schools:** South Eastern Middle School  
Kennard-Dale High School

**Host Organization:** Shrewsbury Assembly of God, Shrewsbury

\*Please refer to your district's plans and procedures for the most up to date information.

## Cecil County

**Evacuation Route:** Local routes to Route 1 North. Make a slight right onto

Route 273 East. Turn right onto Route 272 South. Rising Sun High School is 0.9 miles on the left on Tiger Drive.

**Reception Center:** Rising Sun High School

**Transportation Assistance Number:** (410) 996-5350

## Cecil County-Specific School Information

**Risk School:** Conowingo Elementary

**Host School:** Perryville Middle School

\*Please refer to your district's plans and procedures for the most up to date information

## Harford County

**Evacuation Route:** Local routes to Route 136 to Route 22 West or Route 543 South to Route 22 East to Harford Community College.

Local routes to Route 152 to Fallston High School.

**Reception Centers:** Harford Community College  
Fallston High School

**Transportation Assistance Number:** (410) 838-5800

## Harford County-Specific School Information

**Risk School:** Darlington Elementary School

**Host:** Meadowvale Elementary School

**Risk School:** Dublin Elementary School

**Host:** Churchville Elementary

**Risk School:** North Harford Elementary

**Host:** North Bend Elementary

**Risk School:** North Harford Middle

**Host:** Hickory Elementary

**Risk School:** North Harford High

**Host:** C. Milton Wright High

**Risk School:** Harford Christian School

**Host:** Upper Crossroads Baptist Church

\*Please refer to your district's plans and procedures for the most up to date information.

# Additional Information

For more information on emergency planning in your area, please contact:

## Chester County

Department of Emergency Services  
Government Services Center  
601 Westtown Road, Suite 12  
West Chester, PA 19380-0990  
(800) 732-1580

[www.chesco.org/des](http://www.chesco.org/des)



Chester County Department  
of Emergency Services



@CCDES

### Attention Chester County Residents

Residents of Chester County should sign up to receive official alerts and notifications at:

**ReadyChesCo:** [www.readychesco.org](http://www.readychesco.org)

This system provides direct and immediate information during an emergency and allows you to provide detailed and confidential information useful to your local emergency management agency. If you do not have access to a computer, a friend or family member can complete the online registration for you.

## York County Department of Emergency Services

120 Davies Drive  
York, PA 17402  
(800) 762-8218  
(717) 840-2990

<https://yorkcountypa.gov/541/Emergency-Management>

## Lancaster County Emergency Management Agency

P.O. Box 219  
Manheim, PA 17545-0219  
(800) 808-5236

<https://co.lancaster.pa.us/141/Emergency-Management>

## Pennsylvania Emergency Management Agency

1310 Elmerton Avenue  
Harrisburg, PA 17110  
[www.pema.pa.gov](http://www.pema.pa.gov)  
717-651-2001

## Maryland Department of Emergency Management

State Emergency Operations Center,  
Camp Fretterd Military Reservation  
5401 Rue Saint Lo Drive  
Reisterstown, MD 21136-4541  
(410) 517-3600

<https://mdem.maryland.gov/Pages/default.aspx>

## Cecil County, Department of Emergency Services

107 Chesapeake Blvd., Suite 108  
Elkton, MD 21921  
(410) 996-5350

<https://www.ccgov.org/government/emergency-services>

Cecil County Government uses automated mass notification systems to disseminate important information about our community, such as emergency instructions regarding a Peach Bottom Event, road closures or other emergencies impacting the County. Residents and businesses may receive phone, text and email messages through the automated systems. Additional information can be found on our webpage at: <https://www.ccgov.org/government/emergency-services> or by calling (410) 996-5350.

All information submitted is confidential.

## Harford County Department of Emergency Services

2220 Ady Road  
Forest Hill, MD 21050  
(410) 638-4900

[www.harfordpublicsafety.org](http://www.harfordpublicsafety.org)

Harford County Government uses the Blackboard Connect notification service to disseminate important information about our community, such as emergency instructions regarding a Peach Bottom Event, road closures or other emergencies impacting the County. This system can send phone, text, and email messages to residents and businesses. Residents and businesses with unlisted phone numbers must click on the "Sign Up Now" link at: [www.harfordpublicsafety.org](http://www.harfordpublicsafety.org) or [www.harfordcountymd.gov](http://www.harfordcountymd.gov) or call (410) 638-4029.

All information is confidential.

## Constellation Energy Corporation

[www.constellationenergy.com](http://www.constellationenergy.com)



Peach Bottom Atomic Power Station  
([www.constellationenergy.com](http://www.constellationenergy.com))

© 2023 Constellation Energy Corporation



@ConstellationEG