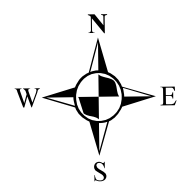


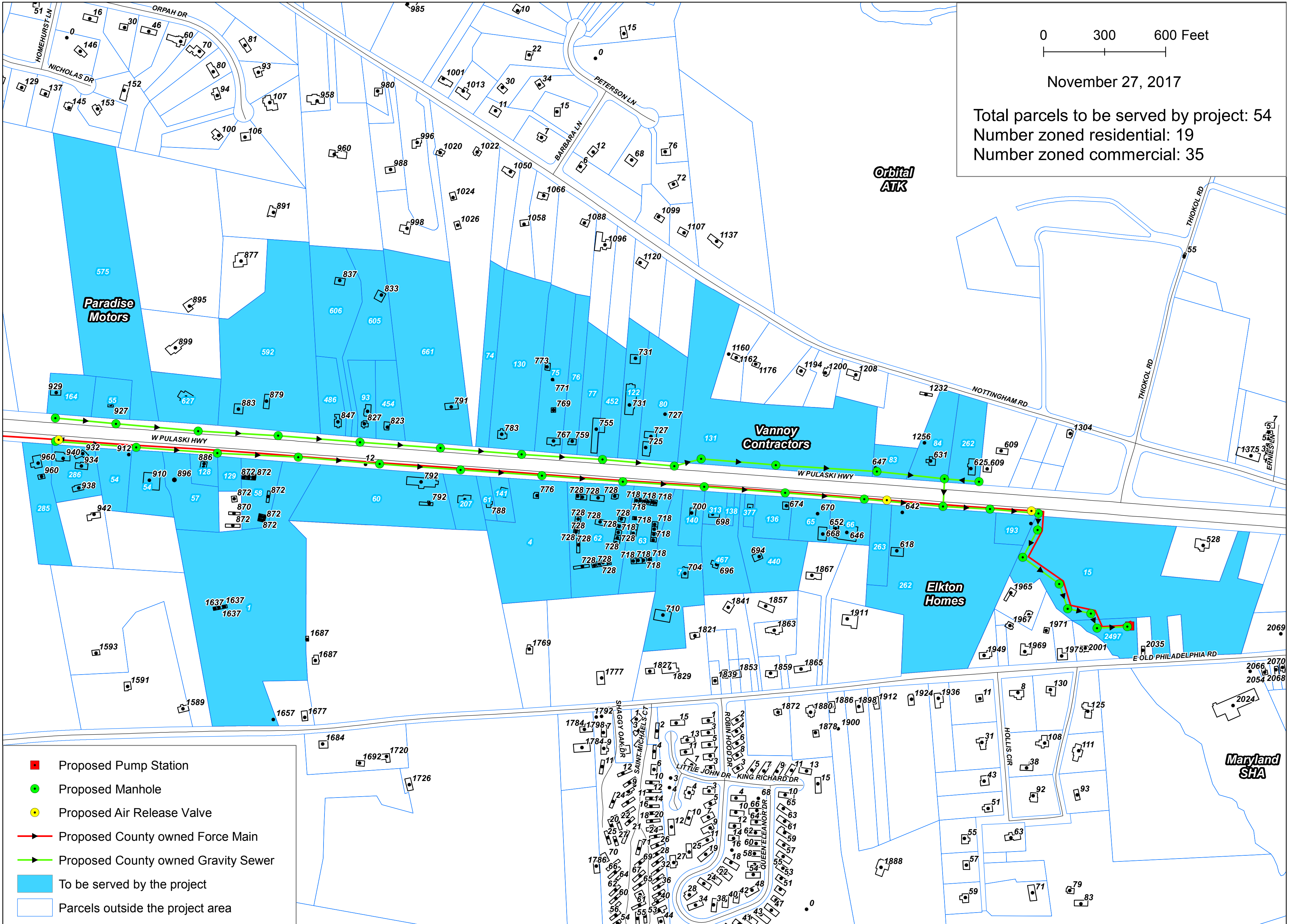
Elkton West Sanitary Sewer Subdistrict - Phase 2 Mill Run Sanitary Sewer Extension



0 300 600 Feet

November 27, 2017

Total parcels to be served by project: 54
 Number zoned residential: 19
 Number zoned commercial: 35



- Proposed Pump Station
- Proposed Manhole
- Proposed Air Release Valve
- Proposed County owned Force Main
- Proposed County owned Gravity Sewer
- To be served by the project
- Parcels outside the project area