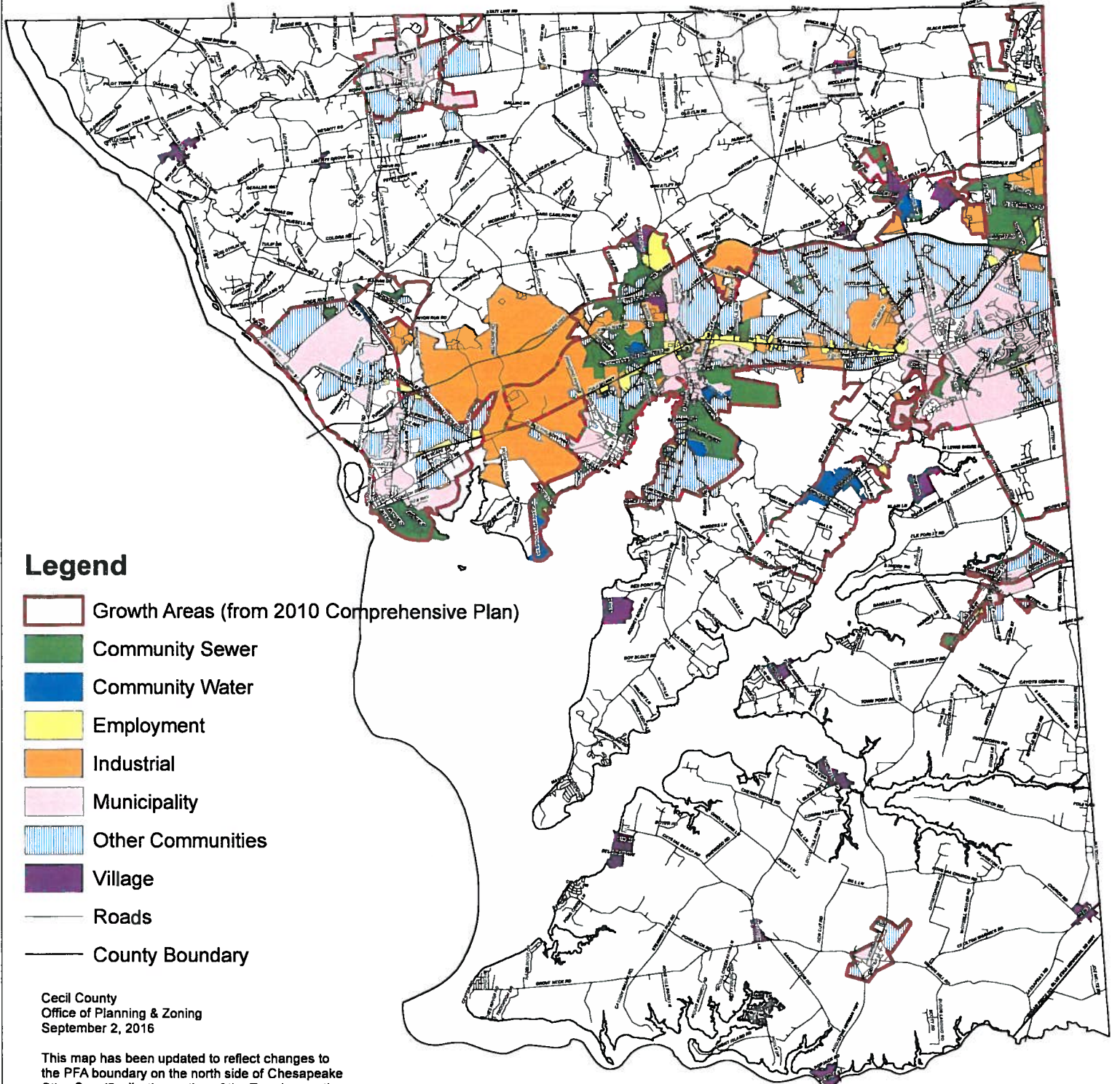







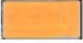



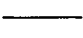
Cecil County Priority Funding Areas



Resolution No. 61-2016
Cecil County Priority Funding Areas
Exhibit A



Legend

-  Growth Areas (from 2010 Comprehensive Plan)
-  Community Sewer
-  Community Water
-  Employment
-  Industrial
-  Municipality
-  Other Communities
-  Village
-  Roads
-  County Boundary

Cecil County
Office of Planning & Zoning
September 2, 2016

This map has been updated to reflect changes to the PFA boundary on the north side of Chesapeake City. Specifically, the portion of the Town's growth area not already within Town limits has been added to the PFA "other community" category.

The change was requested by the Town of Chesapeake City on September 1, 2016, approved by the County Council of Cecil County on XXXXXX, and approved by MDP on XXXXXX.

