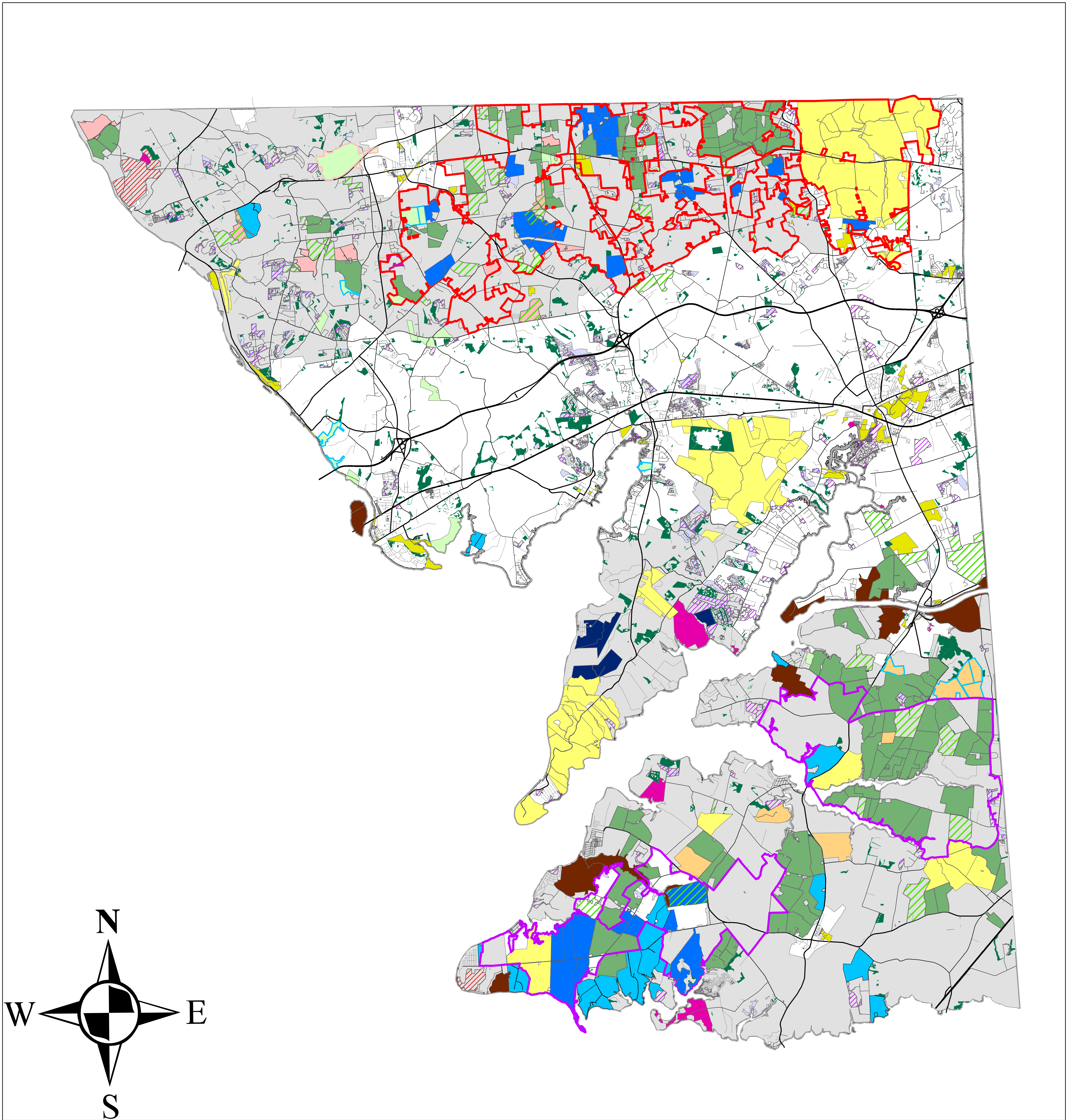


Cecil County Protected Lands



Legend

- | | | | | | |
|--|-----------------------------------|--|-------------------|--|-----------------------------|
| | Forest Legacy Eligibility Area | | MALPF Easement | | Rural Legacy Easement |
| | Fair Hill Rural Legacy Area | | MET Easement | | Forest Legacy |
| | Sassafras River Rural Legacy Area | | CLT Easement | | Private Easement |
| | District | | CLT-PDR Easement | | County (or Town) Lands |
| | Common Open Space | | CLT-MET Easement | | State Lands |
| | Program Open Space Easement | | ESLC Easement | | Federal Lands |
| | PDR Easement | | ESLC-MET Easement | | Priority Preservation Areas |
| | | | | | Forest Retention Areas |

Cecil County
 Department of Land Use & Development Services
 July 13, 2021

