

ARTESIAN WATER MARYLAND

BOARD OF CECIL COUNTY COMMISSIONERS



August 21, 2012

PENNSYLVANIA

DELAWARE

PORT DEPOSIT

Rising Sun

ELKTON WEST

Elkton

MOUNTAIN HILL

North East

Charlestown

Perryville

NOR THEAST RIVER

PINE HILLS

BIG ELK RIVER

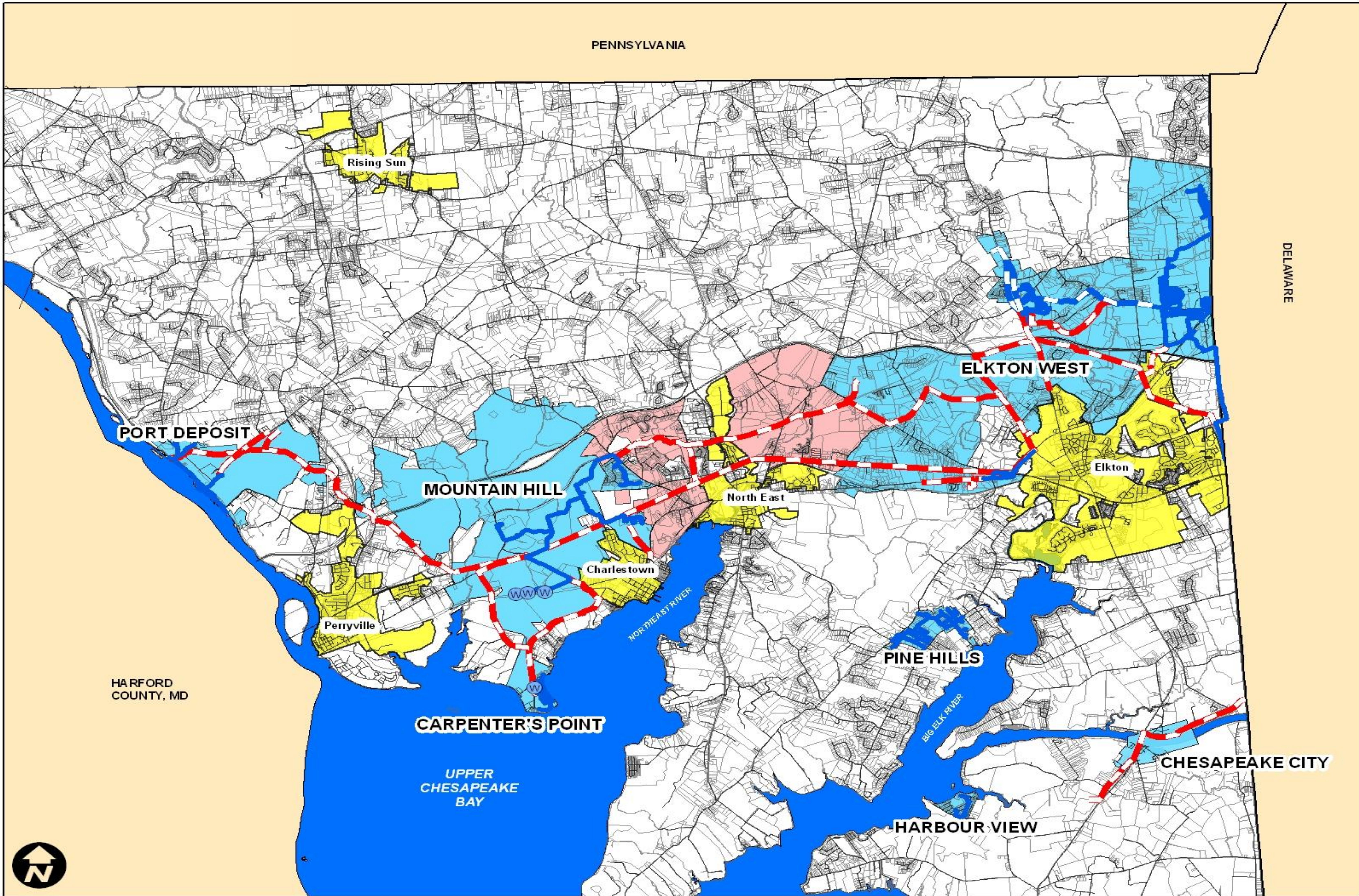
HARFORD COUNTY, MD

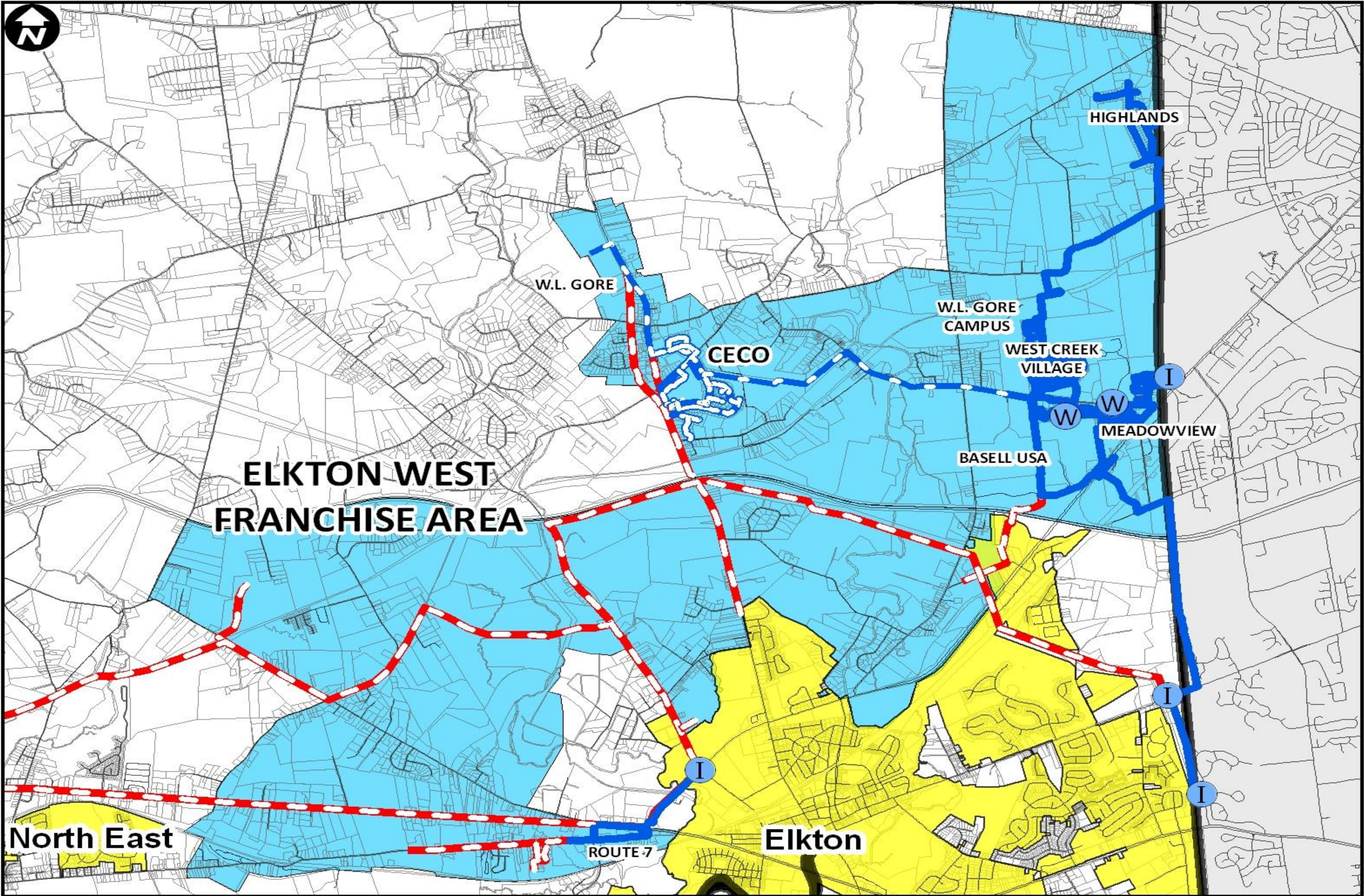
CARPENTER'S POINT

UPPER CHESAPEAKE BAY

CHESAPEAKE CITY

HARBOUR VIEW





ELKTON WEST FRANCHISE AREA

HIGHLANDS

W.L. GORE

CECO

W.L. GORE
CAMPUS

WEST CREEK
VILLAGE

MEADOWVIEW

BASELL USA

North East

ROUTE 7

Elkton

ELKTON WEST

Demand Based on Cecil Comprehensive Plan

- 📍 2008: 0.39 MGD
- 2030 Demand: 1.2 MGD
- Increase: 206%

2012 Elkton West Supply

- Artesian: 3.00 MGD
- Meadowview: 0.18 MGD

Excess Capacity Available: **1.98 MGD**

PENNSYLVANIA

DELAWARE

PORT DEPOSIT

Rising Sun

ELKTON WEST

Elkton

MOUNTAIN HILL

North East

Charlestown

Perryville

NORTH EAST RIVER

PINE HILLS

BIG ELK RIVER

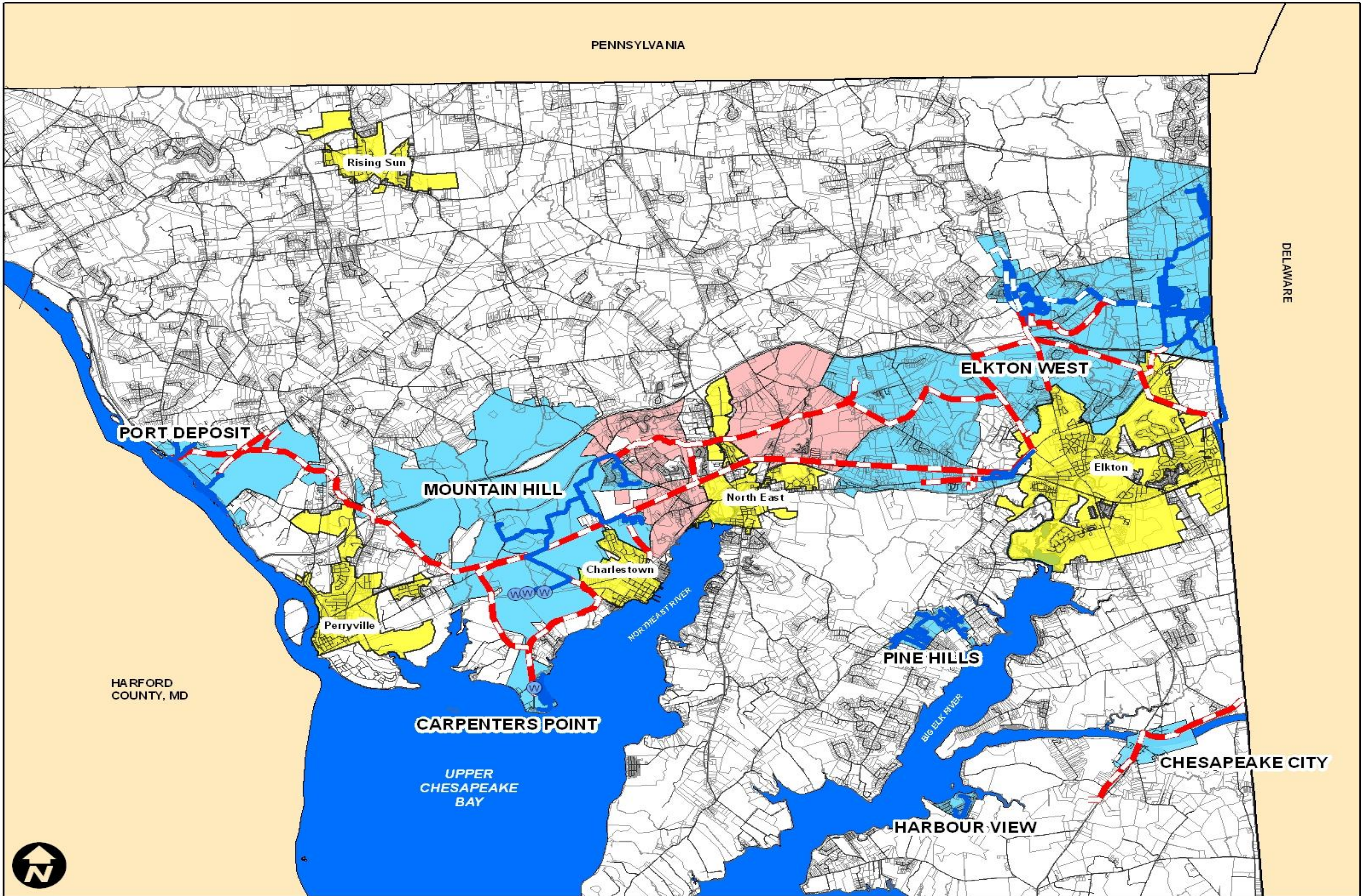
HARFORD COUNTY, MD

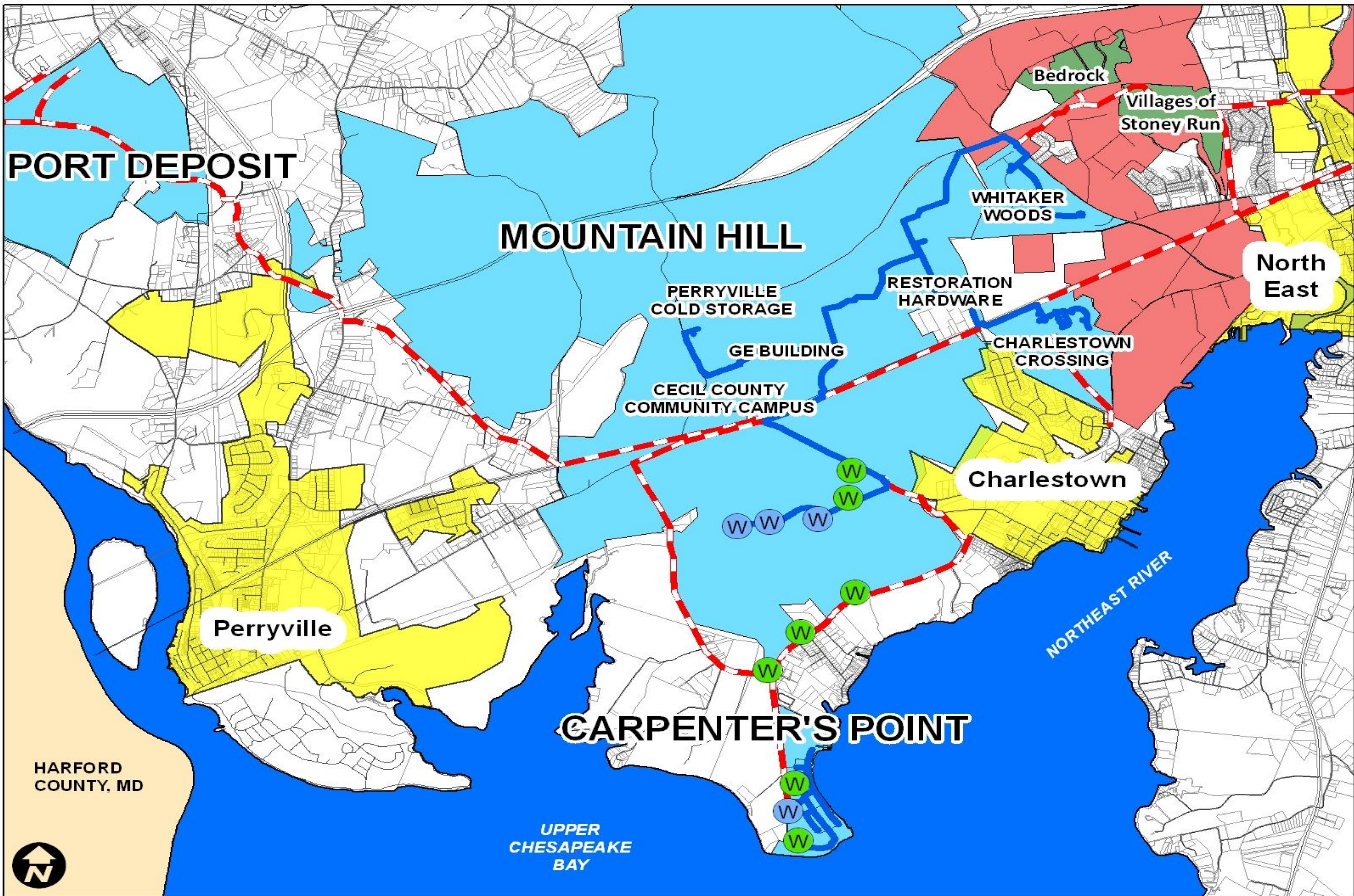
CARPENTERS POINT

UPPER CHESAPEAKE BAY

CHESAPEAKE CITY

HARBOUR VIEW





MOUNTAIN HILL AND CARPENTER'S POINT

System	2012	2030
Demand*	0.05 MGD	0.382 MGD
Supply	0.345 MGD	1.5 MGD
Elkton West Demand	0.420 MGD	1.2 MGD

* Projections based on Build-Out of Charlestown Crossing, Whitaker Woods, and Principio Business Park (2006 MDE Appropriations Permit)

MOUNTAIN HILL AREA SUPPLY

Current Allocation	MGD
Carpenter's Point (3 Wells)	0.048
Mountain Hill (3 Wells)	0.297
Total Allocated Supply	0.345

Additional Sources of Supply	MGD
Two Well Sites at Carpenter's Point	0.4
Five Well Sites at Mountain Hill	0.8
Additional Total Yield	1.2

PENNSYLVANIA

DELAWARE

PORT DEPOSIT

Rising Sun

ELKTON WEST

MOUNTAIN HILL

Elkton

North East

Charlestown

Perryville

PINE HILLS

HARFORD COUNTY, MD

NORTH EAST RIVER

CARPENTER'S POINT

UPPER CHESAPEAKE BAY

BIG ELK RIVER

CHESAPEAKE CITY

HARBOUR VIEW

