

Catch on

to

Cecil  
County!





## TABLE OF CONTENTS

### Foodie Destinations 2

Restaurants (2) Wineries & Breweries (4) Sweet Treats, Coffee (5)

### Things to Do 6

Outdoor Recreation (6) Farm Fun & Trail Rides (7) Waterfront Fun (7) Catch the Action (8) Golf (8) History (8) The Arts (9)

### Specialty Shops 12

### Weddings 13

### Places to Stay 14

Inns / Hotels / Campgrounds / Camping Resorts

### Marinas & More 16

Marinas, Ramps & Launches, Bait & Tackle

### Event Highlights 17

### Towns & Map 18

Cecilton, Charlestown, Chesapeake City, Elkton, North East, Perryville, Port Deposit, Rising Sun

## FOODIE ALERT!

*Restaurants, Wineries & Vineyards, Breweries, Sweet Treats, and Coffee*

EXPERIENCE local and award winning restaurants offering mouthwatering menu items. Discover delicious Chesapeake Bay entrées, sizzling steaks, sushi, down-home family fare, and more at eateries along the waterfront, in charming small towns, or in the countryside. Enjoy indoor or deck dining, music, scenic views, and shops within walking distance. Specialty food destinations have taste-tempting baked goods, wine, craft beer, homemade ice cream, chocolates, and farm fresh delights. Hungry? Visit FoodieCecil.com!

## Restaurants

### DESTINATION KEY

BD = Boat Docks  
S = Seasonal  
WF = Waterfront  
WV = Water View

### CECILTON

**Cecilton Pizzeria** – 410-275-9300;  
[ceciltonpizzeria.com](http://ceciltonpizzeria.com)

**Pizza House Family Restaurant** –  
410-275-2233; [pizzahousemd.com](http://pizzahousemd.com)

### CHARLESTOWN

**Market Street Café** – 410-287-  
6374; [marketstreetcafemd.com](http://marketstreetcafemd.com)

**Wellwood River Shack** – 410-287-  
6666; [wellwoodcrabs.com](http://wellwoodcrabs.com); BD, S

**The Wellwood** – 410-287-6666;  
[wellwoodclub.com](http://wellwoodclub.com); BD, WV

### CHESAPEAKE CITY

**Bayard House** – 410-885-5040;  
[facebook.com/p/The-Bayard-House-100063618550933/](https://facebook.com/p/The-Bayard-House-100063618550933/); WF

**Chesapeake Inn & Marina** –  
410-885-2040; [chesapeakeinn.com](http://chesapeakeinn.com);  
BD, WF

**Jo Jo's Diner** – 410-885-5066;  
[jojodiner.com](http://jojodiner.com)

**Prime 225** – 410-885-7009;  
[Facebook.com/p/Prime-225-100063615518193](https://Facebook.com/p/Prime-225-100063615518193)

**Schaefer's Canal House** –  
410-885-7200;  
[schaeferscanalhouse.com](http://schaeferscanalhouse.com); BD, WF

# Foodie Destinations

**Tap Room** – 410-885-2344,  
[taproomcrabhouse.com](http://taproomcrabhouse.com)

## EARLEVILLE

**Annie's on the Beach**  
– 410-275-2205

**Beach Grill Plus** – 410-275-9173

## ELKTON

**Asian & Sushi Bistro** – 410-398-3333; [sushigrillbistro.com](http://sushigrillbistro.com)

**Baker's Restaurant** – 410-398-2435; [bakersrestaurant.net](http://bakersrestaurant.net)

**Casa Mezcal** – 443-207-2066;  
[elktonmexicanrestaurant.com/](http://elktonmexicanrestaurant.com/)

**C3ntral Tavern** – 410-392-5000;  
[c3ntraltavern.com](http://c3ntraltavern.com)

**Enzo's New York Square** –  
410-392-3000;  
[enzosnysquarepizza.com/](http://enzosnysquarepizza.com/)

**Flame Kabab & Gyro** – 443-207-8496; [flamekabab.business.site](http://flamekabab.business.site)

**J & J Pho** – 410-620-1888;  
[facebook.com/jjphocecil](http://facebook.com/jjphocecil)

**JoJo's Super Dogs** – 410-392-9830; [jojossuperdogs.com](http://jojossuperdogs.com)

**Mario's Pizza** – 410-392-3111  
[mariospizaofelkton.com](http://mariospizaofelkton.com)

**Mick's Pub & Crabs** –  
443-485-6007; [facebook.com/](http://facebook.com/MicksCrabHouse)  
[MicksCrabHouse.com](http://MicksCrabHouse.com)

**Spork** – 443-593-3775;  
[go.lavutogo.com/sporkcafe](http://go.lavutogo.com/sporkcafe)

**Taco Master** – 443-207-5619;  
[tacomasterandbar.com/](http://tacomasterandbar.com/)

**UnWined on the Water** –  
443-406-3947; Triton Marina;  
[unwinedmd.com](http://unwinedmd.com); WF

**Villa Corona Mexican Grill** –  
443-207-5390;  
[villacoronamexicangrill.com/](http://villacoronamexicangrill.com/)

*Plus popular chain restaurants  
such as Chilis, Cracker Barrel, Olive  
Garden, & more, in addition to  
faster food options*

## FAIR HILL

**Hilltop Inn** – 410-398-1512

**Wesley's** – 410-398-3696;  
[wesleysrestaurant.com](http://wesleysrestaurant.com)

## NORTH EAST

**Bay Crawlers Crab Shack** – 410-287-7070; [baycrawlersmd.com](http://baycrawlersmd.com); S

**Forge Southern Comfort** – 443-877-6446; [forgesoutherncomfort.com](http://forgesoutherncomfort.com)

**Mr Pho Vietnamese Noodle  
House**, 410-656-7843,  
[skiplinow.com/shop/587846h](http://skiplinow.com/shop/587846h)

**Nauti Goose** – 410-287-7880;  
[nautigoose.net](http://nautigoose.net); BD, WF

**North East Family Restaurant**  
– 410-656-7749

**Pier One** – 410-287-6599;  
[pier1restaurant.com](http://pier1restaurant.com)

**Snatcher's Creekside** – 410-656-7045; [facebook.com/](http://facebook.com/snatcherscreekside)  
[snatcherscreekside](http://snatcherscreekside.com)

**Steak & Main** – 410-287-3512;  
[steakandmain.com](http://steakandmain.com)

**Woody's Crab House** – 410-287-3541; [woodyscrabhouse.com](http://woodyscrabhouse.com);

**Woody's Tacos &  
Tequila** – 443-715-2032;  
[woodystacosandtequila.com](http://woodystacosandtequila.com)

*Plus popular chain eateries  
and faster food*

## PERRYVILLE

**Barnwood** – 888-983-9653,  
[greatwolf.com/maryland/](http://greatwolf.com/maryland/dining-shopping/dining/barnwood)  
[dining-shopping/dining/barnwood](http://dining-shopping/dining/barnwood)

**Campfire Kitchen** –  
888-983-9653, [greatwolf.com/](http://greatwolf.com/maryland/dining-shopping/dining/campfire-kitchen)  
[maryland/dining-shopping/](http://maryland/dining-shopping/dining/campfire-kitchen)  
[dining/campfire-kitchen](http://dining/campfire-kitchen)

**Ercole's Pizza** – 410-642-3200;  
[facebook.com/ErcolesPizza](http://facebook.com/ErcolesPizza)

**Johnny's Sushi House**  
– 410-642-0009;  
[johnnysushihouse.com](http://johnnysushihouse.com)

**Karlee's Subworks** –  
410-642-6722;  
[karleesubworkspizza.com](http://karleesubworkspizza.com)



# Foodie Destinations



**Suya Republic** – 410-992-2824

**Sportsbook Bar & Grill** –  
410-378-8500; [hollywoodcasino.com/perryville.com/dining](http://hollywoodcasino.com/perryville.com/dining)

**Timbers** – 888-983 9653;  
[greatwolf.com/maryland/dining-shopping/dining/timbers](http://greatwolf.com/maryland/dining-shopping/dining/timbers)

*Plus popular chain eateries  
and faster food*

## PORT DEPOSIT

**Backfin Blues** – 410-378-2722; [backfinbluesgroup.com](http://backfinbluesgroup.com)

**D'Lorenzo's Pizza & Grill**  
– 410-378-2800

**Granite Run Taproom** – 443-747-4015; [graniteruntap.com](http://graniteruntap.com)

**Lee's Landing and Dock Bar** – 443-747-4006;  
[leeslandingdockbar.com](http://leeslandingdockbar.com); BD, WF, S

**Old South Smoke House** –  
410-378-0018; [ossmokehouse.com](http://ossmokehouse.com)

## RISING SUN

**Hatchers On Main** – 610-806-9573; [hatcheronmain.com](http://hatcheronmain.com)

**Spready Oak Country Café**  
– 410-658-5252

**Riviera Maya** – 410-658-1655;  
[restaurantrivieramaya.com](http://restaurantrivieramaya.com)

*Plus popular chain eateries  
and faster food*



## SASSAFRAS AREA

**Fish Whistle at the Granary** –  
410-275-1603; [fishandwhistle.com](http://fishandwhistle.com);  
WF, BD

**Sassafras Harbor Café**  
– 410-508-0271; [facebook.com/sassafrasharborcafe](http://facebook.com/sassafrasharborcafe); S, WV

**Signals Grille** – 410-275-1352; [facebook.com/signalsrestaurant](http://facebook.com/signalsrestaurant); WV

## WARWICK

**Captain Ron's** – *(stay tuned for additional info)*

## Wineries & Vineyards

**Blue Elk Vineyard** –  
88 River's Edge Rd, North  
East; 443-674-8800;  
[blueelkvineyard.com](http://blueelkvineyard.com); WV

**Bohemia Manor Farm** –  
237 Bohemia Manor Farm Ln,  
Chesapeake City; 410-885-2500;  
[facebook.com/bohemiamanorfarm](http://facebook.com/bohemiamanorfarm);  
WV

**Broken Spoke Winery** – 942  
Glebe Rd, Earleville; 302-547-6022;  
[brokenspokewinery.com](http://brokenspokewinery.com)

**Dove Valley Vineyard & Winery**  
– 645 Harrington Rd, Rising Sun;  
410-658-8388; [dovevalleywine.com](http://dovevalleywine.com)

[DiscoverCecil.com](http://DiscoverCecil.com)  
410-996-6299

## Breweries

**5th Company Brewing** – 325  
Front St, Perryville; 410-618-2046  
[5thcompanybrewing.com](http://5thcompanybrewing.com)



**Bayheads Brewing Company**  
– 401 Second St, Chesapeake City;  
[bayheadsbrewing.com](http://bayheadsbrewing.com)

**Bog Turtle Brewery**  
– 10 E. Main St., Rising Sun  
484-758-0416;  
[bogturtlebrewery.com](http://bogturtlebrewery.com)

**Elk River Brewing Company** – 112  
E. Main St, Elkton; 443-207-8454;  
[elkriverbrewing.com](http://elkriverbrewing.com)

**Maryland Beer Company** – 601 N.  
Bridge St, Suite C, Elkton; 443-406-  
7319; [mdbeerco.com](http://mdbeerco.com)



**Susky River Beverage Company** – 80 Alstone  
Farm Lane, Perryville;  
410-896-8741  
[suskyriver.com](http://suskyriver.com)

**Valhalla Brewing Company** – 41 Cherry Hill  
Rd, Elkton; 443-207-8059;  
[valhallabrewco.com](http://valhallabrewco.com)

**Soda Jerk** – 26 B  
Rising Sun Town Center,  
[facebook.com/sodajerkecreammd](https://facebook.com/sodajerkecreammd)

**The Inside Scoop, LLC** –  
129 Strohmaier Lane Rising Sun,  
410-214-2400; [facebook.com/p/The-  
Inside-Scoop-LLC-100093647531395](https://facebook.com/p/The-Inside-Scoop-LLC-100093647531395)

**Grounded Coffee Co.** – 4899  
Pulaski Highway, Perryville  
667-737-8809 [facebook.com/  
groundedcoffeemd/](https://facebook.com/groundedcoffeemd/)

**Haident's Coffee & Café** – 1610 W  
Pulaski Hwy, Elkton, 410-656-7775,  
[haidentcoffee.com](http://haidentcoffee.com)

**Rise & Grind Café** – 8 Main  
St, Rising Sun; 410-658-0002;  
[risegrindcafe.com](http://risegrindcafe.com)

## Coffee Break

**Café on the Bay** – 19 Bohemia  
Ave, Chesapeake City; 410-885-  
7154; [cafeonthebaymd.com](http://cafeonthebaymd.com)

**Chesapeake Bay Coffee Co.** – 130 S. Main St.,  
North East; 410-656-7106;  
[chesapeakebaycoffeeco.com](http://chesapeakebaycoffeeco.com)

**Cool Beans Sandwich & Coffee Co.** – 14 S. Main St, Port Deposit;  
410-945-1112;  
[coolbeansportdeposit.com](http://coolbeansportdeposit.com)

**East Main Café** – 126 E. Main St,  
Elkton; 443-593-3197

## Sweet Treats

**Chesapeake Candy Works** –  
109 Bohemia Ave. Chesapeake City  
410-905-7950;  
[chesapeakecandyworks.com](http://chesapeakecandyworks.com)

**Little Lamb Café & Baked Goods**  
– 2728 Augustine Herman Hwy,  
Chesapeake City; 410-885-7022;  
[littlambcafe.com](http://littlambcafe.com)

**North East Chocolates** – 24 S.  
Main St, North East; 443-907-7682;  
[nechocolates.com](http://nechocolates.com)





## THINGS TO DO!

### *Outdoor Recreation, Farm Fun & Trail Rides, Waterfront Fun, Catch the Action, Golf Courses, History, The Arts*

EXPERIENCE the great outdoors at Cecil County's State Parks. Elk Neck State Park sits on a peninsula where the Northeast River and Elk River meet the Chesapeake Bay, offering beautiful panoramic views. The park is 2,370 acres of woodlands, marshes, and white clay cliffs, with boat launch, historic Turkey Point Lighthouse, and a sandy beach. Hike, fish, camp under the stars, and visit nearby Town of North East. Fair Hill NRMA's 5,656 acres has 80 miles of trails for horseback riding, hiking, and biking. Discover historic sites and

enjoy fishing surrounded by pristine fields, rolling hills, and woodlands. The Fairgrounds and the Special Event Zone host exciting events such as the world class Maryland 5 Star at Fair Hill, Highland Gathering Scottish Games, Fair Hill Races, and Cecil County Fair. Bohemia River State Park is 460 acres of scenic upland, forest, meadows, and wetlands near historic Chesapeake City, with recreational trails for nature lovers and wildlife fans. The picturesque shoreline features 8,600 feet of waterfront along Great Bohemia Creek. Elk Neck State Forest is 3,500 acres with seasonal activities such as hunting, hiking, mountain biking, horseback riding, a shooting range, and the Arboretum Trail. The forest supports a diverse habitat of trees with an understory of mountain laurel, azaleas, and native shrubs.

### Outdoor Recreation

**FREE Nature Guide!**  
Call 410-996-6299, or visit  
[DiscoverCecil.com](http://DiscoverCecil.com)

**Bohemia River State Park** –  
4030 Augustine Herman Hwy,  
Chesapeake City; 667-500-2417;  
<https://mddnr.info/bohemia>

**C&D Canal Recreational Trail** –  
North Chesapeake City, Lock St & Ferry  
Dock; 410-885-5298;  
[chesapeakecity-md.gov/things-to-do](http://chesapeakecity-md.gov/things-to-do)

**Calvert Regional Park** – Walking  
trail, Frisbee golf, and sports tournament  
venue; 304 Brick Meetinghouse  
Rd, North East; 410-656-5125

**Chesapeake Country Scenic  
Byway—All American Road** –  
[visitmaryland.org/scenicbyways](http://visitmaryland.org/scenicbyways)

**Elk Neck State Forest** –  
717 Irishtown Rd, North East;  
410-287-5675

**Elk Neck State Park** –  
4395 Turkey Point Rd, North East;  
410-287-5333;  
<https://mddnr.info/elkneck>

**Elkton Golf and Batting Center** –  
390 E. Pulaski Hwy, Elkton; 410-392-  
7888; [elktongolf.com](http://elktongolf.com)

**Fair Hill NRMA (Natural  
Resources Management Area)** –  
300 Tawes Dr, Elkton; 410-398-1246;  
<https://mddnr.info/fairhill>

**Fin Bikes & Kayaks** – N.  
Chesapeake City, Furnace Bay, and  
Elk, Bohemia, & Northeast Rivers,  
833-736-8346, [findf.in](http://findf.in)

**Foot Golf at Chesapeake Bay Golf  
Club** – 128 Karen Drive, Rising Sun;  
410-658-4343; [chesapeakegolf.com](http://chesapeakegolf.com)

**Lower Susquehanna Heritage  
Greenway** – 410-457-2482;  
[upperbaytrails.com](http://upperbaytrails.com)

**North East Adventure Paintball**  
– 2235 Pulaski Hwy, North East; 667-  
365-0351; [neapaintball.com](http://neapaintball.com)

**Outdoor Extreme Paintball •  
Chesapeake City** – 2941 Old  
Telegraph Rd, Chesapeake City; 410-  
885-5555; [oxcc.com](http://oxcc.com)

**Turkey Point Lighthouse  
Trail** – North East; 410-287-5333;  
<https://mddnr.info/elkneck>



# Things to Do!



## Farm Fun & Trail Rides

**Fairwinds Farm** – 41 Tailwinds Ln, North East; 410-658-8187; [fairwindsstables.com](http://fairwindsstables.com)

**Grove Point Stables** – by appt; 1855 Grove Neck Rd, Earleville; 252-305-3421; [grovepointstables.com](http://grovepointstables.com)

**Milburn Orchards** – 1495 Appleton Rd, Elkton; 410-398-1349; [milburnorchards.com](http://milburnorchards.com)

**Painted Sky Alpaca Farm** – 95 Knight House Ln, Earleville; 410-275-9423; [paintedskyalpacafarm.com](http://paintedskyalpacafarm.com)

**Plumpton Park Zoo** – 1416 Telegraph Rd, Rising Sun; 410-658-6850; [plumptonparkzoo.org](http://plumptonparkzoo.org)

**Rolling Hills Ranch and Freedom Hills** – 33 Rolling Hills Ranch Ln, Port Deposit; 410-378-3817; [rollinghillsranch.org](http://rollinghillsranch.org)

**Sinking Springs Retreat Center** – 843 Elk Forest Rd, Elkton; 443-553-4618; [sinkingspringsretreatcenterllc.com](http://sinkingspringsretreatcenterllc.com)

## Waterfront Fun

### Rides, Rentals, Parks, Beaches

CECIL COUNTY boasts five rivers, the C&D Canal, and the Upper Chesapeake Bay. Bring your boat, book a tour, or paddle along the shorelines. Be sure to save time at the end of the day to watch a brilliant sunset burst across a river horizon.

### BOAT RIDES

**Captain John's Sassafras Adventures** – 100 George St, Georgetown, 410-648-5935, [sassafrasadventures.com](http://sassafrasadventures.com)

**Chesapeake Water Tours** – 108 Bohemia Ave, Chesapeake City; 443-566-3386; [facebook.com/ChesapeakeWaterTours](https://facebook.com/ChesapeakeWaterTours)

**MV Summer Breeze** – 208 Bank St, Chesapeake City; 410-885-5500; [mvsummerbreeze.com/](http://mvsummerbreeze.com/)

**Tiki Splash** – North East; 443-553-6805; [tikisplashmd.com/contact-us/](http://tikisplashmd.com/contact-us/)

### RENTALS & CHARTERS

**Bay Venture Outfitters** – 104 W. Church Point Rd, North East; 877-523-9555; [bayventureoutfitters.com](http://bayventureoutfitters.com)

**Fin Bikes & Kayaks** – Various locations; 833-736-8346

**Kayaking Made EZ** – Various locations; 443-731-1100; [kayakingmadeez.com](http://kayakingmadeez.com)



**Nautical Rentals & Charters** – 724 Water St, Charlestown; 443-566-6223; [nauticalrentalsandcharters.com](http://nauticalrentalsandcharters.com)

### WATERFRONT PARKS

**Charlestown** – Avalon Park – Water & Louisa Ln.; Northeast River – Long Pt. Park & Veterans Park, Water St.

**Chesapeake City** – C&D Canal, Bohemia Ave

**Elkton** – Elk Creek, Bridge St.

**North East** – Northeast River, 200 Walnut St

**Perryville** – Furnace Bay – 100 Marion Tapp Pkwy

**Port Deposit** – Susquehanna River, Marina Park, 160 S. Main St.

### BEACHES

**Crystal Beach** – Elk River - End of Rt 282 West, Earleville, 410-275-1183

**Elk Neck State Park Beach** – Northeast River - 4395 Turkey Point Rd, North East; 410-287-5333



# Things to Do!



## CHECK IN ADVANCE for days and hours:

**C&D Canal Museum** – Mon.–Fri.  
8–4; 815 Bethel Rd, Chesapeake City,  
410-885-5622

**Chesapeake City Museum** –  
98 Bohemia Ave, 410-885-  
5298; [sites.google.com/view/  
chesapeakecitymuseum/home](https://sites.google.com/view/chesapeakecitymuseum/home)

## Covered Bridges

*Foxcatcher* – Fair Hill NRMA,  
Tawes Dr, Elkton  
*Gilpin Falls* – North East Rd  
(Route 272), North East

## Catch the Action!

**Cecil County Dragway** – 1916  
Theodore Rd, Rising Sun; 410-287-  
5486; [cecilcountdragway.com](http://cecilcountdragway.com)

**Escapades Escape Room Center** –  
170 W. Main St, Elkton, by appoint-  
ment; [escapadesllc.com](http://escapadesllc.com)

**Hollywood Casino** – 1201  
Chesapeake Overlook Pkwy,  
Perryville; 410-378-8500;  
[hollywoodcasinoperryville.com](http://hollywoodcasinoperryville.com)

## Golf Courses

**Chesapeake Bay Golf Club** – 128  
Karen Dr, Rising Sun; 410-658-4343;  
[chesapeakegolf.com](http://chesapeakegolf.com)

**Furnace Bay** – 79 Chesapeake  
View, Perryville; 410-642-6816;  
[furnacebaygc.com](http://furnacebaygc.com)

**Patriot's Glen National  
Golf Club** – 300  
Patriots Way, Elkton;  
443-485-6069;  
[patriotsglengolf.com](http://patriotsglengolf.com)

## History

Explore vibrant and historic down-  
towns. Hear the echo-o-o of your  
voice in a covered bridge, or step back  
in time with a visit to Mt. Harmon  
Plantation & Nature Preserve at  
Worlds End.

Take a road trip along the All-American  
Road starting at Chesapeake City.  
Walk a trail to Turkey Point Lighthouse,  
circa 1833, to experience a magnifi-  
cent view from a cliff overlooking the  
headwaters of Chesapeake Bay.

Venture onto scenic back roads to  
get a glimpse of manor homes,  
horse farms, 18th and 19th Century  
churches, and numerous National  
Register historic markers. Add a touch  
of days gone by to your Cecil County  
journey!

**Historical Society of Cecil County  
and DeWitt Museum** – Mon. &  
Thurs. 10-4, 1st Sat 10-2; 135 E.  
Main St, Elkton; 410-398-1790;  
[cecilhistory.org](http://cecilhistory.org)

**Mt Harmon Plantation, at World's  
End** – Manor house tours, nature  
trails & events; Thurs. – Sun 10-3, May  
– Oct; 600 Mt Harmon Rd., Earleville,  
410-275-8819, [mountharmon.org](http://mountharmon.org)

**Turkey Point Lighthouse** –  
Check web site for trail and light-  
house reconstruction closures;  
<https://mddnr.info/elkneck>

**Upper Bay Museum** – Seasonal  
hours Fri–Sun 10–4 or by appt; 219  
Walnut St, North East; 410-287-2675;  
[upperbaymuseum.org](http://upperbaymuseum.org)







### LIMITED HOURS:

**107 House** – 343 Market St,  
Charlestown; 410-287-6173;  
[charlestownmd.org](http://charlestownmd.org)

**Bainbridge Museum** –  
6 S. Main St, Port Deposit;  
410-378-4641

**Historic Elk Landing** – 590  
Landing Lane, Elkton; 410-620-6400;  
[elklanding.org](http://elklanding.org)

**Perry Point Veterans Museum**  
– Perry Point VA Medical Center,  
Perry Point; 410-642-2411 x 22151;  
[tinyurl.com/3fbtuth6](http://tinyurl.com/3fbtuth6)

**Perryville Railroad Museum**  
– 650 Broad St, Perryville; 410-939-  
0546; [perryvillemd.org](http://perryvillemd.org)

**Port Deposit Heritage Museum**  
– 98 N. Main St, Port Deposit;  
[portdepositheritage.org](http://portdepositheritage.org)

**Rodgers Tavern** – 259 Broad  
St, Perryville; 410-642-2164;  
[rodgerstavern.com](http://rodgerstavern.com)

---

*DiscoverCecil.com*  
410-996-6299

---

## The Arts

**Art Space on Main** – Pottery  
Studio – 138 W. Main St, Elkton,  
410-620-2464; [artspaceonmain.com](http://artspaceonmain.com)

**Cecil County Arts Council** – Art  
exhibits, workshops, and events. 135  
E. Main St, Elkton; 410-392-5740;  
[cecilarts.org](http://cecilarts.org)

**Cecil College Cultural Center &  
Milburn Stone Theatre**  
*North East Campus* – One  
Seahawk Drive; 410-287-1037;  
*Elkton Campus* – 107 Railroad  
Ave, Elkton; 410-392-3366

**Showcase on Main** –  
Community Theatre; 116 E. Main  
Street, Elkton, 443-252-2155;  
[showcaseonmain.com](http://showcaseonmain.com)

**Street Lamp Productions** – Valley  
View Dr., Rising Sun; 410-658-5088;  
[streetlampproductions.org](http://streetlampproductions.org)



**The Art Den** – 10 E Main St,  
#B, Rising Sun; 443-967-3663;  
[theartdenllc.com](http://theartdenllc.com)





# Escape to Cecil



*SPECIAL THANKS to photographers Andrew Muff, John Smith, Mary Jones, Mitch LeBovic, Patrick McNamara, Peter Langley, Richard LeGates, Wags Media, Walter Dorsett, and others for providing images in this brochure.*



*County . . . Just a Daydream Away!*



# Specialty Shops!



## SPECIALTY SHOPS

### CHESAPEAKE CITY

**Chesapeake Candy Works** – 410-905-7950; [facebook.com/profile.php?id=61558926622781](https://facebook.com/profile.php?id=61558926622781)

**Chick's** – 410-885-3933; [facebook.com/CHICKSS](https://facebook.com/CHICKSS)

**Gallorete Boutique** – 267-374-5265; [Galloreteboutique.com](https://Galloreteboutique.com)

**Lighthouse Gifts & Custom Framing** – 410-885-3610; [facebook.com/profile.php?id=100063525252882](https://facebook.com/profile.php?id=100063525252882)

**Mercantile at Back Creek** – 410-885-7024; [themercantileatbackcreek.com](https://themercantileatbackcreek.com)

**Neil's Artwork** – 443-350-5299

**South Side Styles** – 410-885-7097; [facebook.com/SouthSideStylesMD](https://facebook.com/SouthSideStylesMD)

**The Old Gray Mare Gift Shoppe** – 410-885-2655; [facebook.com/oldgraymaregift](https://facebook.com/oldgraymaregift)

### ELKTON

**Art Space on Main** – 410-620-2464; [artspaceonmain.com](https://artspaceonmain.com)

**Fair Hill Saddlery** – 443-406-3456; [fairhillsaddlery.com](https://fairhillsaddlery.com)

**Millstone Jewelers** – 443-593-3761; [millstonejewelers.com](https://millstonejewelers.com)

**Spartan Cigar & Pipe Lounge** – 443-350-9808; [spartancigarlounge.com/](https://spartancigarlounge.com/)

**Suz Quilt Studio** – 443-207-2743

**The Palette & The Page** – 410-398-3636; [paletteandpage.com](https://paletteandpage.com)

### NORTH EAST

**5 & 10 Antique Market** – 410-287-8318; [5and10antiques.com](https://5and10antiques.com)

**Bay Haven Cigar Lounge** – 443-715-2912; [bayhavencigars.com](https://bayhavencigars.com)

**Belle's Acres** – [facebook.com/BellesAcresGoatMilkSoap/](https://facebook.com/BellesAcresGoatMilkSoap/)

**Fashionality** – 443-309-4356; [fashionalitystore.com](https://fashionalitystore.com)

**Finesse Sportswear** – 203-800-7924; [facebook.com/FinesseSportswear/](https://facebook.com/FinesseSportswear/)

**Kathy's Corner Shop** – 410-287-2333; [kathyscornershop.com](https://kathyscornershop.com)

**Maryland Cruzin For A Cause** – 443-480-7574; [facebook.com/MarylandRecycledCreations](https://facebook.com/MarylandRecycledCreations)

**Nature's Glow Candle Company** – 443-553-8019; [naturesglowcandlecompany.com](https://naturesglowcandlecompany.com)

**North East Chocolates & Gifts** – 443-907-7682; [nechocolates.com](https://nechocolates.com)



**Silver and Sassy** – 410-287-1535; [thesisterstores.com](https://thesisterstores.com)

**Sissy's** – 410-441-1802; [facebook.com/profile.php?id=61555768389474](https://facebook.com/profile.php?id=61555768389474)

**Three Painted Arrows** – 410; [facebook.com/threepaintedarrows](https://facebook.com/threepaintedarrows)

**Treats By Zeets** – 443-715-2286; [treatsbyzeets.com](https://treatsbyzeets.com)

**Wyre Naturals** – 410-618-8222; [wyrenaturals.square.site](https://wyrenaturals.square.site)

### PORT DEPOSIT

**Artisan's Shoppe at the Gerry House** – [facebook.com/p/Artisans-Shoppe-at-The-Gerry-House-100086095775969/](https://facebook.com/p/Artisans-Shoppe-at-The-Gerry-House-100086095775969/)

**Rose's Imaginations** – 443-599-6518; [facebook.com/p/roses-imaginations-61550713175530](https://facebook.com/p/roses-imaginations-61550713175530)

**The Shoppe at the Manor** – 610-513-5354; [facebook.com/TheShoppeattheManor](https://facebook.com/TheShoppeattheManor)

### RISEING SUN AREA

**Sun Pharmacy-Gifts** – 410-658-6444; [sunpharmacy.com](https://sunpharmacy.com)

**You Empowered Boutique** – 443-757-8985

# Wedding & Event Venues

## FROM CLASSIC ELEGANCE TO CASUAL COUNTRY CHARM

In the 20th century, Elkton established itself as a popular marriage destination. No waiting period was necessary to obtain a license, so love-struck couples flocked to the town to "tie the knot." Some of the more famous people to say "I do" in Cecil County include baseball great Willie Mays, actors Burt Lahr and Joan Fontaine, basketball star Charles Barkley, and former US Attorney General John and Martha Mitchell.

Say "I Do" or plan your next event at a unique destination along the I-95 corridor. From classic elegance to casual country charm, Cecil County has varied venue options for weddings and events such as ballrooms, waterfront venues, barns, vineyards, countryside, golf courses, and historic sites.

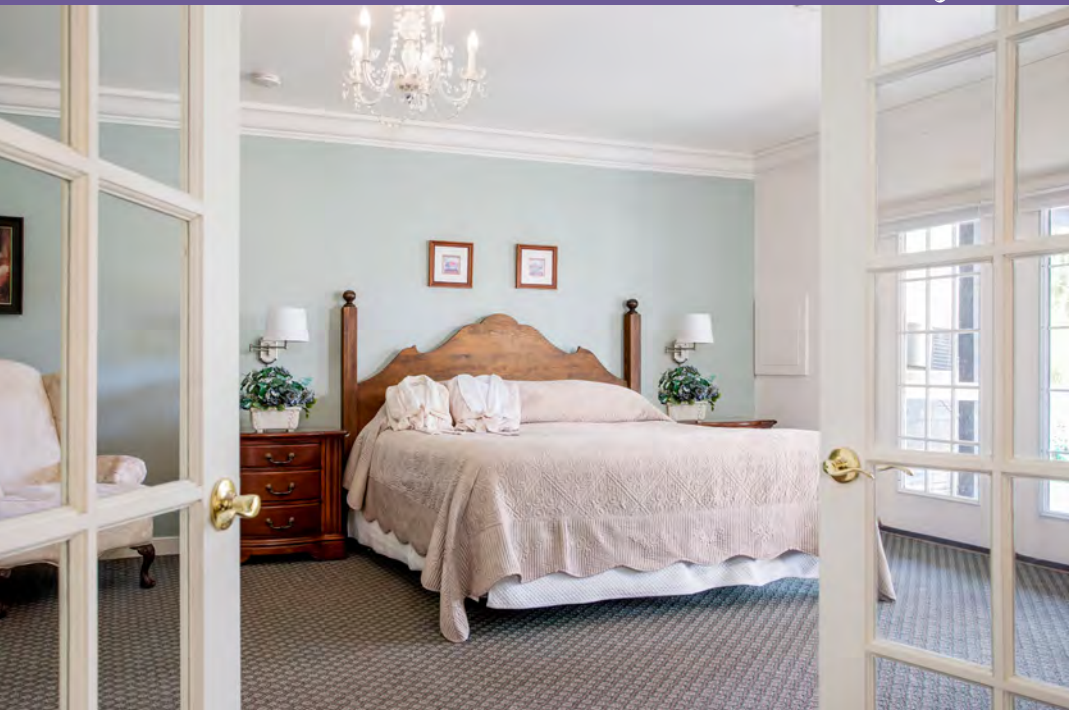
*Visit [DiscoverCecil.com](http://DiscoverCecil.com) for a full venue list and links*



Annabelle Dando Photography



# Places to Stay



## PLACES TO STAY

### INNS

Each inn has its own charm. Unique features include spa packages, waterfront decks, sailboat rides, a putting green, learning to ride a horse, a player grand piano, history, and fireplaces.

**Blue Max Inn** – 300 Bohemia Ave., Chesapeake City; 410-885-2781; [bluemaxinn.com](http://bluemaxinn.com)

**Elk Forge** – 807 Elk Mills Rd, Elk Mills; 410-392-9007, 877-ELK-FORGE; [elkforge.com](http://elkforge.com)

**Fairwinds Farm** – 41 Tailwinds Lane, North East; 410-658-8187; [fairwindsstables.com](http://fairwindsstables.com)

**Inn at the Canal** – 104 Bohemia Ave., Chesapeake City; 410-885-5995; [innatthecanal.com](http://innatthecanal.com)

### Rolling Hills Ranch B&B

33 Rolling Hills Ranch Lane, Port Deposit; 410-378-3817

**Ship Watch Inn** – 401 First Street, Chesapeake City; 410-885-5300; [shipwatchinn.com](http://shipwatchinn.com)

**Tiny House B&B at Sinking Springs** – 843 Elk Forest Rd., Elkton; 443-553-4618; [sinkingspringsretreat-centerllc.com/bed-and-breakfast](http://sinkingspringsretreat-centerllc.com/bed-and-breakfast)

### HOTELS

**Best Western Chesapeake Bay North Inn** – 39 Elwoods Rd, North East; 410-287-5450; [bestwestern.com](http://bestwestern.com)

**Comfort Inn & Suites** – 1 Center Drive, North East; 410-656-8807, 800-631-3803; [choicehotels.com](http://choicehotels.com)

**Chesapeake Lodge at Sandy Cove** – 60 Sandy Cove Rd, North East. 410-287-5433, 800-234-COVE; [sandycove.org](http://sandycove.org)

**Great Wolf Lodge** – 1240 Chesapeake Overlook Pkwy, Perryville; 888-983-9653; [greatwolf.com/maryland](http://greatwolf.com/maryland)

**Hampton Inn** – 2 Warner Road, Elkton; 410-398-7777; [hilton.com/en/hotels/elkmdhx-hampton-elkton](http://hilton.com/en/hotels/elkmdhx-hampton-elkton)

**Holiday Inn Express** – 101 Hotel Plaza, North East; 410-287-0008; [ihg.com](http://ihg.com)

**Holiday Inn Express & Suites** – 1570 Elkton Rd, Elkton; 443-350-9154; [ihg.com](http://ihg.com)

**La Quinta Inn & Suites** – 304 Belle Hill Road, Elkton; 410-620-9494; [laquintanewarkelkton.com](http://laquintanewarkelkton.com)

### CAMPGROUNDS

**Charlestown Manor Beach & Campground** – 5 Edgewater Ave., North East; 443-309-2656

**Craft Haven Campground & Marina** – 900 Carpenters Pt. Rd., Perryville. 410-642-2515

**Elk Neck State Park** – 4395 Turkey Pt. Rd., North East; 877-620-8367; <https://mddnr.info/elkneck>

**Sandy Cove Ministries Campground** – 60 Sandy Cove Rd, North East. 410-287-5433, 800-234-COVE; [sandycove.org](http://sandycove.org)

### CAMPING RESORTS

**Buttonwood Beach R.V. Resort** – 170 Buttonwood Beach Rd., Earleville. 410-275-2108; [buttonwoodbeach.com](http://buttonwoodbeach.com)

**Woodlands Camping Resort** – 265 Starkey Ln., Elkton; 410-398-4414; [woodlandscampingresort.com](http://woodlandscampingresort.com)





*Escape* to Cecil County . . .



# Marinas & More



## Marinas

### BOHEMIA RIVER

Bohemia Anchorage  
 Bohemia Bay Yacht Harbor  
 Long Point Marina  
 Richmond's Marina  
 Safe Harbor Bohemia Vista  
 Safe Harbor Hacks Point  
 Two Rivers Yacht Basin

### C&D CANAL

Chesapeake Inn & Marina  
 Schaefer's Marina

### ELK RIVER

Harbour North Marina  
 Dolphin Marina at the Cove  
 Locust Point Marina  
 Taylor's Marina  
 Triton Marina

### NORTHEAST RIVER

Anchor Marina  
 Bay Boat Works  
 Charlestown Marina  
 Cianelli Marina  
*dba McDaniel Yacht Basin*  
 Craft Haven  
 Lee's Marina  
 North East River Marina  
 North East River Yacht Club  
 Shelter Cove Marina  
 Wellwood Marina

### SASSAFRAS RIVER

Duffy Creek Marina  
 Sailing Associates  
 Sassafras Harbor Marina  
 Skipjack Cove Marina

### SUSQUEHANNA RIVER

Owens Landing Marina  
 Sam's Marina  
 Tome's Landing Marina

## Ramps & Launches

*(Not at a marina – Fees & permits  
 subject to change)*

**Bohemia River Launch** – NW side  
 of Bohemia River on 213

**Charlestown Ramp** – Water &  
 Market Street, Charlestown; Ramp fee

**Chesapeake City Ramp** – Bethel  
 Rd, Chesapeake City; 410-885-5621

**Conowingo Creek Landing** –  
 Mt. Zoar Road, Conowingo

**Elk Neck State Park** – 4395 Turkey  
 Point Road, North East, 410-287-5333

**North East Beach Area, Northeast  
 River** – Canoes, Kayaks; Fee

**Rogues Harbor** – Ramps on Elk  
 River, Rogues Harbor Rd, Elk River;  
 Ramp Fee

**Elk River Park Ramp, River Bend  
 Parkway** – 32 River Bend Pkwy,  
 Elkton; 410-392-4537 or 410-658-  
 3000; County permit required

**Fredericktown Ramp** – Sassafras  
 Street; 410-996-8101; County permit  
 required

**Marina Park** – Kayak launch; South  
 Bridge St, Elkton; 410-398-0970

**North East Community  
 Park** – Docks, pier,  
 kayak launch; Walnut  
 Street, North East;  
 410-287-5801

**Perryville Boat Ramp/Launch** –  
 501 Roundhouse Drive, Perryville;  
 410-642-6066; Town permit required

**Perryville Community Park** –  
 Kayak Launch; 100 Marion Tapp  
 Parkway; 410-642-6066

**Port Deposit Ramp** – Rt. 222,  
 Susquehanna River; 410-378-2121;  
 Town permit required

**Stemmer's Run** – Pond Neck Rd,  
 Earleville; Elk River; 410-996-8101;  
 County permit required

## Bait & Tackle

**Herb's Tackle Shop** – 203 S. Main  
 Street, North East; 410-287-5490

**Lindy's Market** – 5440 Pulaski  
 Highway, Perryville; 410-642-2323

**Sarge's Bait & Tackle** – 751  
 Augustine Herman Hwy., Elkton;  
 410-620-9183

**West Marine Supplies** –  
 475 Mauldin Ave, North East;  
 410-287-6600





# Event Highlights

**FOUR SEASONS OF FUN!** For More Events visit [DiscoverCecil.com](http://DiscoverCecil.com)



## WINTER

- *Chesapeake City Horse Parade & Poplar Hall Christmas Market*
- *Cecil Co. Christmas Parade*
- *Candlelight House Tour*
- *Winter Lights – Cecil Nights*



## SPRING

- *St Mary Anne's Garden Market*
- *Fair Hill Scottish Games*
- *Mt Harmon Wicomico Hunt Point to Point*



## SUMMER

- *Cecil County Fair*
- *Classic Car Shows*
- *Fireworks Celebrations*
- *Sunfest*
- *Winery & Brewery Events*



## AUTUMN

- *Elkton Fall Fest*
- *Maryland 5 Star at Fair Hill*
- *Milburn Orchard Events*



**Mt. Harmon**



**Scottish Games**

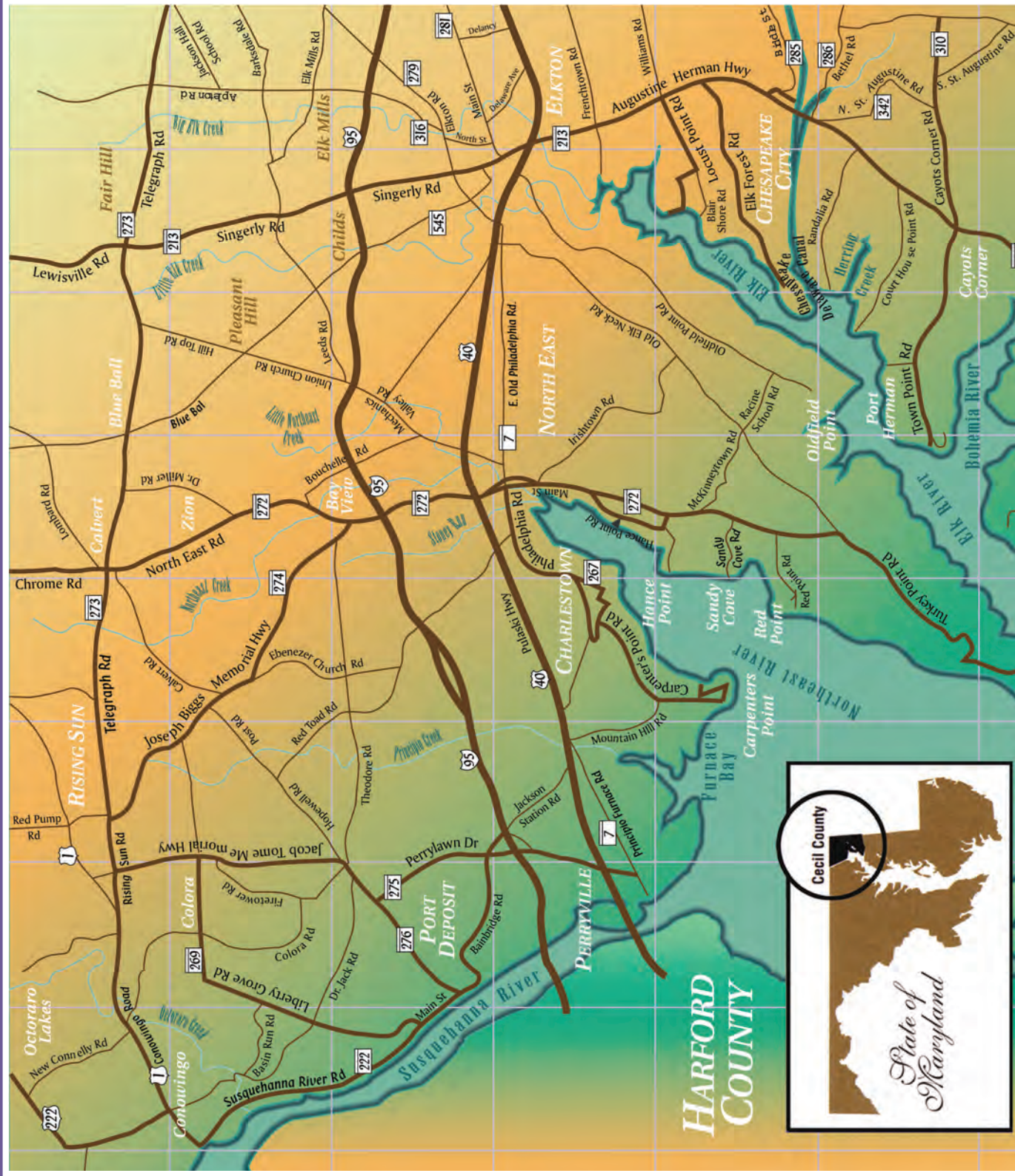
>>> **MD 5 Star at Fair Hill** – (below right): One of only two 5 Star events in the U.S., and seven world-wide, the prestigious 5 Star designation is the pinnacle of the sport of Eventing, best described as an equestrian triathlon. Experience the event in Cecil County each October! Below: 5 Star Champion Boyd Martin riding On Cue. [maryland5star.us](http://maryland5star.us)

(Shannon Brinkman, photo)

## Maryland 5 Star



# CECIL COUNTY ♦ MARYLAND



HARFORD COUNTY





## OUR TOWNS ~ WITH BEAUTY & CHARM ALL THEIR OWN!

### ◆ Cecilton

In its early years Cecilton began as a cross-roads, and is located in the southern part of the County between the Bohemia River and Sassafas River. The Cecilton area is home to several exquisite manor homes and colonial estates, and rich farmland still surrounds the town today. Just outside town visit beautiful Mt. Harmon Plantation for a tour of the house, colonial kitchen, and grounds. 410-275-2692

### ◆ Charlestown

Chartered in 1742 on the banks of the North East River, the historic district has restored private homes from the 1700s. Initially the primary seaport for MD and southern PA, a stone wharf now serves anglers and boaters. Visitors can arrive at the restaurants and marinas by car or by boat, and the last remaining historic "Ice House" on the entire Chesapeake Bay stands on the waterfront. 410-287-6173

### ◆ Chesapeake City

Once known as the "Village of Bohemia," this town developed with the creation of the C&D Canal. As shipping traffic ensued, houses and businesses sprang up alongshore. Today the picturesque tourist destination has a colorful 1800s flair, with charming inns, shops, a museum, and waterfront eateries. Ships and pleasure boats from around the globe still pass through the canal and under the majestic bridge. 410-885-5298

### ◆ Elkton

Because of its strategic location at the head of the Bay, it was once a shipping port and passenger transportation route, known then as Head of Elk. In the 20th Century it was known as a popular marriage destination. Today Elkton is the County Seat bustling with business activity, and home to the county's first active Arts & Entertainment District with shops, galleries, and more to see and do. 410-398-0970

### ◆ North East

The Northeast River played a significant role in the early years of the town. Mills were built, and farmers and fishermen prospered. St. Mary Anne's church (c. 1700s) has one of the oldest graveyards in the state. Today you will find an abundance of antique and gift shops, a wide array of wonderful restaurants, a waterfront park, family friendly events, and Upper Bay Museum. 410-287-5801

### ◆ Perryville

This town was built on the shores of the Susquehanna River, near a busy ferry landing and tavern that many famous colonial travelers, including George Washington, frequented. By the Civil War period, Perryville gained recognition as a staging area for northern troops and supplies. Today visitors can catch the action at Hollywood Casino-Perryville, visit a historic site, dine, golf, or walk one of the town's attractive trails. 410-642-6066

### ◆ Port Deposit

In the 1800s this town was an extremely busy port and banking center. Fortunes were made there in shipping and granite quarrying. Fishing was also a big industry. Today it's a charming riverside town with wonderful architecture, a river walk, restaurants, boating, and a great fishery. Visitors can learn about Port Deposit's endangered Map Turtles at the seasonal Tome Gas House Visitor Center. 410-378-2121

### ◆ Rising Sun

In the 1700s five wagon train routes met at this spot as frontier travelers passed through on their way west. A cluster of log homes then, today this community boasts a unique county zoo, friendly merchants, Civil War Weekend, and street festival. The town's fascinating history includes that of Nottingham Lots which were granted by William Penn. The new town museum hosts an array of artifacts and collectibles. 410-658-5353

# Explore Cecil County MD!

**CENTRALLY LOCATED** between Philadelphia and Baltimore on I-95, vibrant small towns, 200 miles of waterfront, foodie destinations, and scenic countryside provide the perfect backdrop for adventures and making memories . . .



  
DiscoverCecil.com

**COME BY BOAT OR BY CAR** to visit our tourism office overlooking the Northeast River. Enjoy picnic areas, walking path, fishing, kayak launch, seasonal museum, playground, and beautiful waterfront views!

300 CHERRY STREET | NORTH EAST, MD | 410-996-6299